



LOS ANGELES COUNTY  
Registrar-Recorder/County Clerk

# MEDIA KIT

★ ★ ★ NOVEMBER 8, 2022 ★ ★ ★  
GENERAL ELECTION



[LAVOTE.GOV](https://LAVOTE.GOV)

# TABLE OF CONTENTS

<b>PAGE 3.</b>	<b>About This Election</b>
<b>PAGE 4.</b>	<b>Los Angeles County Statistics</b>
<b>PAGE 5.</b>	<b>Important Election Information</b>
<b>PAGE 6.</b>	<b>Vote Center Information</b>
<b>PAGE 7.</b>	<b>What's New in This Election</b>
<b>PAGE 8.</b>	<b>Supported Languages</b>
<b>PAGE 9.</b>	<b>Electoral Profile</b>
<b>PAGE 10.</b>	<b>Voter Registration Statistics</b>
<b>PAGE 11-13.</b>	<b>Office / District Statistics</b>
<b>PAGE 11.</b>	Political Party Preference
<b>PAGE 12.</b>	Supervisory & Congressional Districts
<b>PAGE 13.</b>	State Senate & State Assembly Districts
<b>PAGE 14-15.</b>	<b>Frequently Asked Questions</b>
<b>PAGE 16-17.</b>	<b>Safe Election Plan</b>
<b>PAGE 18-24.</b>	<b>Voting in Los Angeles County</b>
<b>PAGE 19.</b>	Vote Centers and Voting Period
<b>PAGE 20.</b>	Ballot Marking Device
<b>PAGE 21.</b>	How to Vote on the Ballot Marking Device
<b>PAGE 22.</b>	Save Time at the Vote Center
<b>PAGE 23.</b>	Electronic Pollbook
<b>PAGE 24.</b>	Vote by Mail and Early Voting Options
<b>PAGE 25.</b>	<b>Transporting Ballots For Tabulation</b>
<b>PAGE 26.</b>	<b>Canvass: Finalizing The Vote</b>
<b>PAGE 27.</b>	<b>Election Canvass Schedule</b>
<b>PAGE 28.</b>	<b>Requesting A Recount</b>
<b>PAGE 29.</b>	<b>Media &amp; Communications</b>
<b>PAGE 30-34.</b>	<b>Vote Center Turnout</b>
<b>PAGE 31.</b>	Vote Center Turnout
<b>PAGE 32.</b>	Ballot Drop Box Returns
<b>PAGE 33.</b>	Vote Center Overall Turnout
<b>PAGE 34.</b>	Vote by Mail Overall Turnout

# ABOUT THIS ELECTION



## About this General Election:

- Candidates are not nominated by the political party
- If a candidate has a preferred political party, that party name will appear on the ballot as a reference
- Any voter can vote for the candidate of their choice

### Voter-Nominated

Governor  
Lieutenant Governor  
Secretary of State  
Controller  
Treasurer  
Attorney General  
Insurance Commissioner  
Board of Equalization  
United States Representative  
United States Senator  
State Senator  
State Assembly Member

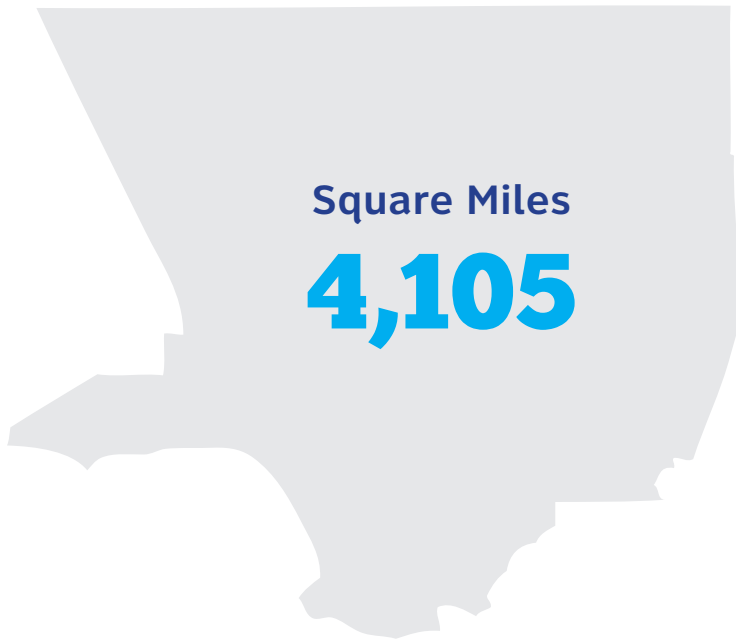
### State Nonpartisan

Superintendent of Public Instruction  
State Supreme Court Justices  
State Courts of Appeal Justices

### Local

County Board of Supervisors  
Sheriff  
Assessor  
Superior Court Judge  
Local Districts or City Contests

# LOS ANGELES COUNTY STATISTICS



## Total Population

**9.8 million**

Based on July 2021 U.S. Census Bureau Stats

## Eligible Population of Voters

**6.6 million**

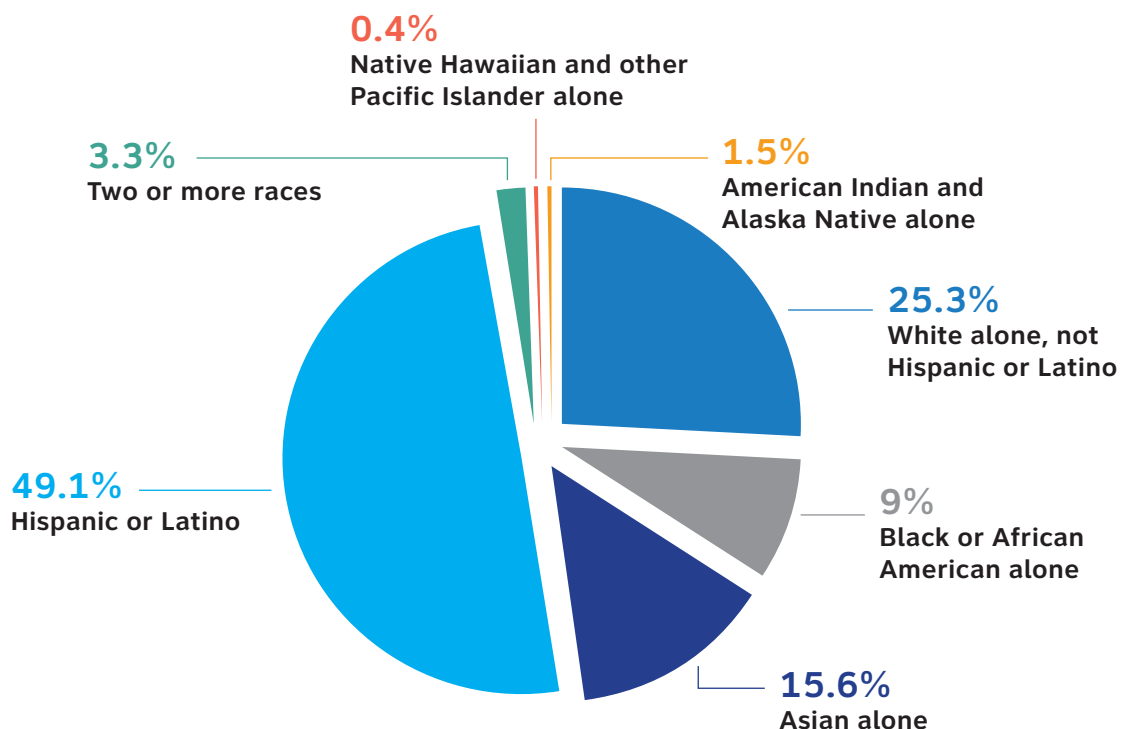
Estimated by SOS as of September 2022

## Registered Voters

**5.6 million**

As of September 2022

## Estimates of Population of Race and Ethnicity in L.A. County






Based on July 2021 U.S. Census Bureau Stats

# IMPORTANT ELECTION INFORMATION

## What You Need to Know

### All voters have been mailed a Vote by Mail ballot for the General Election.

#### VOTE BY MAIL RETURN OPTIONS

-  United States Postal Service -no postage necessary
-  Drop off at any Official Ballot Drop Box
-  Drop off at any Vote Center

#### MULTILINGUAL BALLOTS

We offer ballots and election materials in up to 18 additional languages.

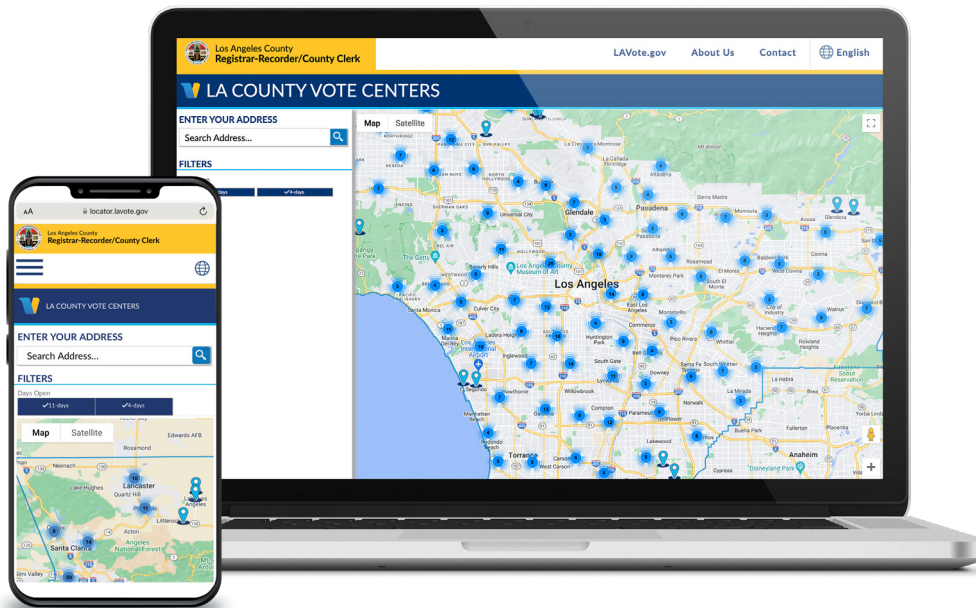
Call our office to request your multilingual ballot at **(800) 815-2666, option 3**



Visit [LAVOTE.GOV](https://LAVOTE.GOV) or call (800) 815-2666 for more information

# VOTE CENTER INFORMATION

Voters in Los Angeles County have the option to cast their ballot in-person at any participating Vote Center.



## Days and Hours:

October 29<sup>th</sup> - November 7<sup>th</sup>: 10 AM - 7 PM

Election Day, November 8<sup>th</sup>: 7 AM - 8 PM

✓ For a list of Vote Centers,  
visit [LOCATOR.LAVOTE.GOV](https://locator.lavote.gov)  
or scan the QR Code



Visit [LAVOTE.GOV](https://lavote.gov) or call (800) 815-2666 for more information

# WHAT'S NEW IN THE 2022 GENERAL ELECTION?

## Impact of Census and Citizens' Redistricting Commission

- After the national census (conducted in 2020), the California Citizens' Redistricting Commission updated district boundaries across the state
- Some voters may be in new Congressional, State Assembly, State Senate, and State Board of Equalizations districts
- Voters will see contests and candidates for their new district
- Check which districts you live in by visiting **LAVOTE.GOV/MYDISTRICT**



# SUPPORTED LANGUAGES



Languages	Voters Requesting Materials	Languages	Voters Requesting Materials
Armenian	1,822	Khmer	1,282
Bengali	382	Korean	37,659
Burmese	259	Mongolian	31
Chinese	48,545	Russian	1,463
Farsi	1,757	Spanish	254,413
Gujarati	162	Tagalog	5,838
Hindi	592	Telugu	59
Indonesian	177	Thai	2,736
Japanese	3,019	Vietnamese	12,882

**TOTAL: 373,078**

As of September 2022



# ELECTORAL PROFILE

As of September 2022



Registered  
Voters  
**5,614,572**



Military & Overseas  
Voters  
**31,157**

## PROFILE OF THIS ELECTION



Offices  
**340**



Local Measures  
**82**



County Measures  
**2**



State Measures  
**7**



Vote Centers  
**640**

\*As of September 2022



Ballot Groups  
**961**



Total Candidates  
Appearing on  
the Ballot  
**934**



Election Precincts  
**3,680**



Election Workers  
**13,000**  
Approximate



Est. Election Cost  
**\$82,000,000**  
Approximate

# VOTER REGISTRATION STATISTICS









As of September 2022



Voters by Age	Registered	% of Registered
18-29	1,168,371	20.81%
30-39	1,101,115	19.61%
40-49	857,578	15.27%
50-59	859,338	15.31%
60-69	807,691	14.39%
70-79	524,492	9.34%
80-89	226,705	4.04%
90+	69,282	1.23%
<b>TOTAL</b>	<b>5,614,572</b>	<b>100%</b>

# POLITICAL PARTY PREFERENCE

As of September 2022

Qualified Parties	Registered	% of Registered
 <b>American Independent</b>	164,372	2.90%
 <b>Democratic</b>	3,003,001	53.50%
 <b>Green</b>	24,383	0.40%
 <b>Libertarian</b>	46,661	0.80%
 <b>No Party Preference*</b>	1,295,139	23.10%
 <b>Other</b>	82,769	1.50%
 <b>Peace &amp; Freedom</b>	37,319	0.70%
 <b>Republican</b>	960,928	17.10%
<b>TOTAL</b>	<b>5,614,572</b>	<b>100.00%</b>

\*The "No Party Preference" group includes those who have no party preference, declined to state a party preference or chose a non-qualified political party.

# OFFICES/ DISTRICTS

As of September 2022

Supervisorial Districts			
District	Registered Voters	District	Registered Voters
1 <sup>st</sup>	1,013,555	3 <sup>rd</sup>	1,203,815

Congressional Districts			
District	Registered Voters	District	Registered Voters
23 <sup>rd</sup>	8,424	35 <sup>th</sup>	72,576
26 <sup>th</sup>	38,003	36 <sup>th</sup>	494,556
27 <sup>th</sup>	441,739	37 <sup>th</sup>	393,377
28 <sup>th</sup>	407,720	38 <sup>th</sup>	410,139
29 <sup>th</sup>	379,119	42 <sup>nd</sup>	396,151
30 <sup>th</sup>	472,348	43 <sup>rd</sup>	396,629
31 <sup>st</sup>	408,700	44 <sup>th</sup>	415,966
32 <sup>nd</sup>	474,614	45 <sup>th</sup>	51,873
34 <sup>th</sup>	352,638		

# OFFICES/ DISTRICTS

As of September 2022

State Senate Districts			
District	Registered Voters	District	Registered Voters
20 <sup>th</sup>	483,828	28 <sup>th</sup>	532,079
22 <sup>nd</sup>	362,464	30 <sup>th</sup>	535,988
24 <sup>th</sup>	683,486	34 <sup>th</sup>	38,643
26 <sup>th</sup>	471,054	36 <sup>th</sup>	50,013

State Assembly Districts			
District	Registered Voters	District	Registered Voters
34 <sup>th</sup>	90,844	53 <sup>rd</sup>	74,164
39 <sup>th</sup>	132,331	54 <sup>th</sup>	211,510
40 <sup>th</sup>	324,053	55 <sup>th</sup>	295,438
41 <sup>st</sup>	240,854	56 <sup>th</sup>	280,146
42 <sup>nd</sup>	115,911	57 <sup>th</sup>	213,527
43 <sup>rd</sup>	248,252	61 <sup>st</sup>	276,559
44 <sup>th</sup>	327,969	62 <sup>nd</sup>	237,083
46 <sup>th</sup>	277,303	64 <sup>th</sup>	242,399
48 <sup>th</sup>	266,794	65 <sup>th</sup>	261,735
49 <sup>th</sup>	250,797	66 <sup>th</sup>	311,850
51 <sup>st</sup>	310,085	67 <sup>th</sup>	50,013
52 <sup>nd</sup>	292,325	69 <sup>th</sup>	282,630

# NOVEMBER 2022 GENERAL ELECTION FAQ

## VOTER REGISTRATION

### HOW CAN I REGISTER TO VOTE?

- ▲ The easiest method to register to vote is online at [LAVOTE.GOV](https://LAVOTE.GOV).
- ▲ Voter registration applications are also available at most government buildings like libraries, DMV offices, Post Offices, and the Registrar Headquarters in Norwalk.
- ▲ Voters must register to vote by **October 24** to receive a Vote by Mail ballot for this election.

### HOW CAN I CHECK MY REGISTRATION STATUS?

- ▲ Voters can check their registration status and information online at [LAVOTE.GOV/VRSTATUS](https://LAVOTE.GOV/VRSTATUS) or call (800) 815-2666, option 2.

### CAN I VOTE IF I MISS THE REGISTRATION DEADLINE?

- ▲ Yes. Any eligible voter who misses the **October 24** deadline can still vote in person at any Vote Center in L.A. County via Conditional Voter Registration (same-day registration).

### HOW AND WHEN SHOULD I UPDATE MY VOTER REGISTRATION?

- ▲ If a voter has moved, changed their name, or wants to change their political party affiliation, they can update their registration at [LAVOTE.GOV](https://LAVOTE.GOV). For voters who have moved out of County or State, please contact the Registrar's office at (800) 201-8999, option 2 to cancel your registration, or visit [LAVOTE.GOV](https://LAVOTE.GOV) to download the Cancel Registration form.

## VOTE BY MAIL

### WHEN WILL I RECEIVE MY VOTE BY MAIL BALLOT?

- ▲ Vote by mail ballots are mailed to all registered voters beginning **October 6**.

### HOW CAN I TRACK MY VOTE BY MAIL BALLOT?

- ▲ Voters can track their ballot by subscribing to **Where's My Ballot** at [california.ballottrax.net](https://california.ballottrax.net). This is a free subscription that sends automatic notifications by text, email, or voicemail on the status of their ballot.

### WHERE CAN I FIND A LIST OF BALLOT DROP BOX LOCATIONS?

- ▲ Online at [LAVOTE.GOV](https://LAVOTE.GOV).
- ▲ A list of convenient Ballot Drop Box locations near the voter's residence is included in the Vote by Mail packet.

### WHY DO I NEED TO SIGN THE RETURN ENVELOPE?

- ▲ The Registrar verifies the signature on the Return Envelope with the signature on the voter's registration record to confirm eligibility.

### DO I PUT MY BIRTHDAY ON THE RETURN ENVELOPE OR THE DATE OF RETURN?

- ▲ Enter the date the ballot is returned. If a voter enters their birth date instead, the ballot will still be processed, and once verified, it will be counted.

### WHEN DO I NEED TO SUBMIT MY BALLOT?

- ▲ Voters can return their ballot as soon as they receive it.
- ▲ All ballots **MUST** be postmarked or returned to a Official Drop Box or Vote Center by Election Day.
- ▲ The Registrar will accept ballots postmarked by Election Day and received within 7 days after Election Day.

# NOVEMBER 2022 GENERAL ELECTION FAQ

## VOTE BY MAIL

### WHAT IF I DON'T RECEIVE A BALLOT OR IT GETS DAMAGED?

- ▲ Voters can request a replacement ballot at [LAVOTE.GOV/REPLACEBALLOT](https://www.lavote.gov/replaceballot). The last day to request a replacement is **November 1**.
- ▲ Call (800) 815-2666, option 2, or email [votebymail@rrcc.lacounty.gov](mailto:votebymail@rrcc.lacounty.gov) with your full name, date of birth, and address.

### HOW CAN I REQUEST A VOTE BY MAIL BALLOT IN A DIFFERENT LANGUAGE?

- ▲ Fill out and return the Language Request Form on the back of the Sample Ballot book.
- ▲ Call the Registrar's Multilingual Services Section at (800) 815-2666, option 3.
- ▲ Supported languages: Armenian, Chinese, Khmer, Farsi, Korean, Spanish, Tagalog, Vietnamese, Hindi, Japanese, Thai, Russian, Burmese, Telugu, Gujarati, Indonesian, Mongolian, and Bengali.

## IN-PERSON VOTING

### CAN I VOTE IN PERSON?

- ▲ Yes. Voters will have the option to vote in person at any Vote Center beginning **October 29**.
- ▲ Vote Centers will be open daily from 10 AM to 7 PM, and from 7 AM to 8 PM on Election Day.

### HOW CAN I FIND A VOTE CENTER?

- ▲ Visit [LOCATOR.LAVOTE.GOV](https://locator.lavote.gov) to view the Vote Center app or call (800) 815-2666, option 1.
- ▲ The app displays all Vote Center locations in LA County and their estimated wait times.
- ▲ Every registered voter will be mailed a separate mailer in mid-October that lists the nearest Vote Center locations to their home.

### WHEN CAN I VOTE IN PERSON?

- ▲ Voters can visit any Vote Center beginning **October 29**.
- ▲ Take advantage of early voting opportunities and vote early.

### HOW ARE YOU KEEPING VOTE CENTERS SAFE FROM COVID-19?

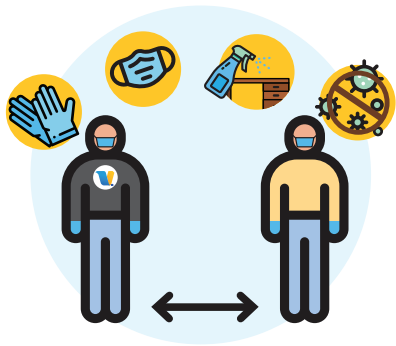
- ▲ All Vote Centers follow current public health and safety guidelines.
- ▲ Election Workers will wear a face mask and wipe down surfaces on a regular basis.
- ▲ Voters are strongly encouraged to wear a face mask.

### DO I NEED TO PROVIDE IDENTIFICATION TO VOTE AT A VOTE CENTER?

- ▲ California law does not require registered voters to show identification when voting.
- ▲ However, if a voter is registering for the first time, they must provide a valid government photo ID or the last four digits of the Social Security number.

# SAFE ELECTION PLAN

The Los Angeles County “Safe Election Plan” aligns with California’s “Election Administration Guidance under COVID-19.” Each was developed in consultation with relevant health authorities using the best public health information available, including guidance provided by the U.S. Centers for Disease Control and Prevention (CDC) and California public health officials.



## The Los Angeles Registrar-Recorder/County Clerk (RR/CC) will:

- Develop a voting location-specific protection plan.
- Train workers on measures to limit the spread of COVID-19, including screening themselves for symptoms and staying home when necessary.
- Establish prevention and self-screenings measures for workers.
- Establish and communicate physical distancing guidelines.
- Implement hand-washing, mask and cleaning guidelines.

## FOR VOTERS

### All registered voters will be mailed a Vote by Mail ballot.

L.A. County will encourage voters to stay home and vote using their mail-in ballot. However, for some individuals it will still be preferable to vote in person. Wherever in-person voting is offered, we will follow the State and County’s public health and safety guidance to provide a safe voting environment.

### COVID-19 Information for Voting In-Person:

- Voters are strongly encouraged to wear a mask in the Vote Center.
- Masks and gloves will be available for voters if requested.
- Hand sanitizer will be provided upon entry and exit of the Vote Center. Hand sanitizer will also be available at key stations during the voting process.
- Social distancing will be encouraged while waiting in line and throughout the check-in and voting process.
- ePollbooks and Ballot Marking devices will be cleaned routinely.
- Voters will be encouraged to take measures to speed up their election process to limit their time in the Vote Center. This includes verifying voter registration in advance, using the Interactive Sample Ballot (ISB) to pre-mark selections, and bringing their Sample Ballot to speed up the voter check-in.
- Voters will be encouraged to take advantage of early voting and vote at off-peak times if possible.
- Curbside voting will continue to be available for voters who are unable to enter the Vote Center.



***Vote Safely  
at Home,  
Make Your  
Voice Heard!***



## FOR ELECTION WORKERS

### Election Workers will be trained to implement the following guidelines:

- Follow prevention measures while at home to help limit the spread of COVID-19.
- Follow California's Return to Work Guidelines if infected for exposed to COVID-19.
- Confirmation of self-screening as part of daily worker sign-in.
- Wash hands or use hand sanitizer before and after preparing food and eating meals, after using the restroom, or handling trash.
- Masks are strongly encouraged for all election workers. Higher quality masks such as a medical grade mask, surgical mask, or n95/kn95 are recommended and made available.
- Establish non-contact norms so workers avoid greeting co-workers and voters with physical contact: "Distancing starts at hello."
- Routinely clean work items and commonly used surfaces.
- Clean ePollbooks and Ballot Marking Devices before start of day, after each voter, on an hourly schedule, and at closing time.
- Limit nonessential visitors to the Vote Center.
- Take special care to disinfect equipment before use by voters with disabilities because they may interact with the equipment in different ways, and some may have unique health vulnerabilities. Accessibility controls for voting equipment will be cleaned before and after each use.
- Single-use disposable ear covers for device headphones will be provided and replaced after each use.

## VOTE CENTER LAYOUT

- Doors propped open.
- Windows will be opened to increase air circulation where possible.
- A custom Vote Center layout will be created for each location that ensures appropriate physical distance throughout the Vote Center to the extent possible.
- One-directional foot traffic.
- Separate routes for entry and exit where possible.
- Check-in stations and Ballot Marking Devices will be placed to create physical distance.
- Each vote center will have a stop station at the entrance where voters will be provided with hand sanitizer. Masks and gloves will be available for voters if needed. An election worker will be stationed here to remind voters of guidelines and recommendations.
- If weather permits, the number of voters in the facility will be limited by moving lines outdoors.

## SIGNAGE

- Signage to remind voters, observers and workers of physical distancing, mask recommendations, and updated foot traffic patterns.
- Clear signage to indicate appropriate distances.
- Posted at entrances and highly visible locations.
- Visual cues (e.g., floor markings, colored tape, or signs) will be deployed to remind workers and voters of appropriate distancing.

## MEDIA, SOCIAL MEDIA AND DIRECT COMMUNICATION

### The County's media campaign will include the following components:

- Voting by mail is a safe choice to avoid exposure to COVID-19 while voting.
- There are alternatives to provide a ballot replacement or to help you cast a ballot without entering a voting site including procedures for requesting a replacement, drop boxes and curbside voting.
- If you must enter a voting location, please:
  - Wear a mask. Masks are strongly encouraged for voters.
  - Maintain appropriate physical distance from people not from your household.
  - Use hand sanitizer before approaching the check-in station and after voting.
  - Follow any additional guidance provided at the voting location.

This plan was developed in conjunction with guidance and recommendations from the Department of Public Health. Therefore, this plan will be modified as necessary to stay in line with current Public Health guidance.

# VOTING IN LOS ANGELES COUNTY



# VOTING SOLUTIONS FOR ALL PEOPLE

# VOTE CENTERS AND VOTING PERIOD

In L.A. County, we have upgraded from polling places to Vote Centers. Voters have the option to cast a ballot in-person at any Vote Center in the County. Vote Centers look and feel like polling places, but provide additional modern features to make voting easy and convenient.



**SAFE**

**SECURE**

**ACCESSIBLE**



Vote at any participating Vote Center in this election with full language services and expanded accessibility



Electronic Pollbooks can look up your voter registration information in real time at any Vote Center



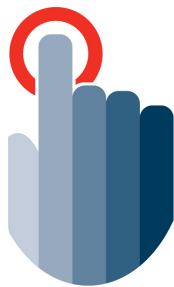
Fully accessible voting equipment available at every Vote Center



Early in-person voting is available 10 days before Election Day – avoid lines and vote early

Every registered voter will be mailed a postcard listing the nearest Vote Center locations to their residence in mid-October. For a listing of all locations and hours visit **LAVOTE.GOV**.

## Why the Change?



**VOTER'S CHOICE**  
CALIFORNIA

You choose **when, where, and how** to vote

The California Voter's Choice Act is a new law passed in 2016 to modernize elections in California by allowing counties to conduct elections under a new model that provides greater flexibility and convenience for voters.

This new election model allows voters to choose when, where, and how to cast their ballot by:

- Expanding in-person early voting options
- Allowing voters to cast a ballot at any Vote Center within their county

More information on the California Voter's Choice Act can be found at **sos.ca.gov**.

## BALLOT MARKING DEVICE



The benefits of technology for an easy and accessible voting experience - with a paper ballot.

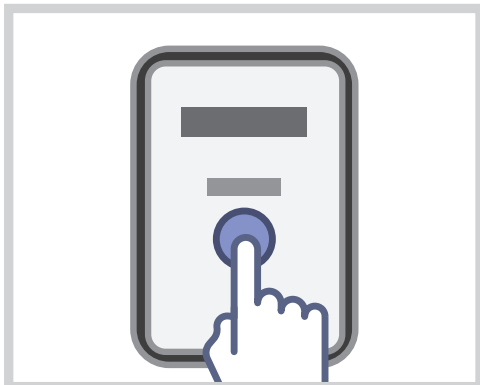
The Ballot Marking Device makes it easy for voters to customize the voting experience to fit their needs. Voters can access 19 languages, adjust the touch screen to a comfortable angle, change the display settings such as text size and contrast or go through the ballot using the audio headset and control pad.

Security remains a top priority for Los Angeles County, that's why this device is not connected to a network or the internet. The easy-to-follow instructions can guide any voter through the voting process without the need for assistance.

Previously, voters with mobility or visual challenges were asked to go to a separate voting booth; not any more. The Ballot Marking Device provides all the accessibility features previously available and upgrades them all into one device.

# HOW TO VOTE ON THE BALLOT MARKING DEVICE (BMD)

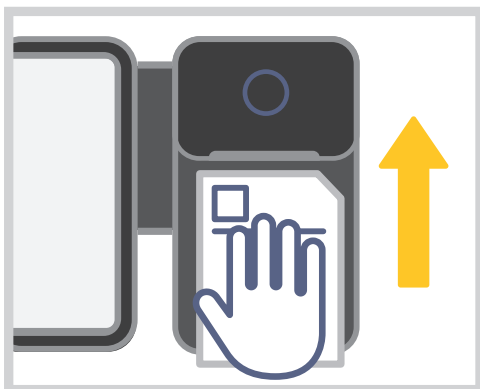
## 1. Tap to start



## 2. Select language



## 3. Insert ballot



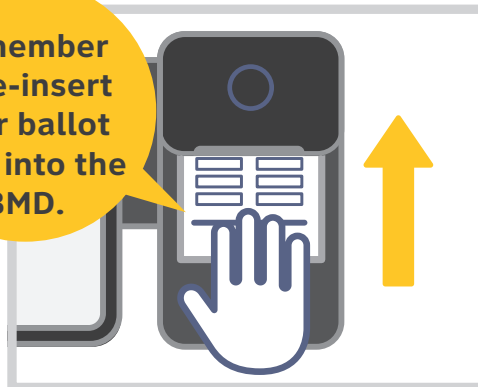
## 4. Make selections



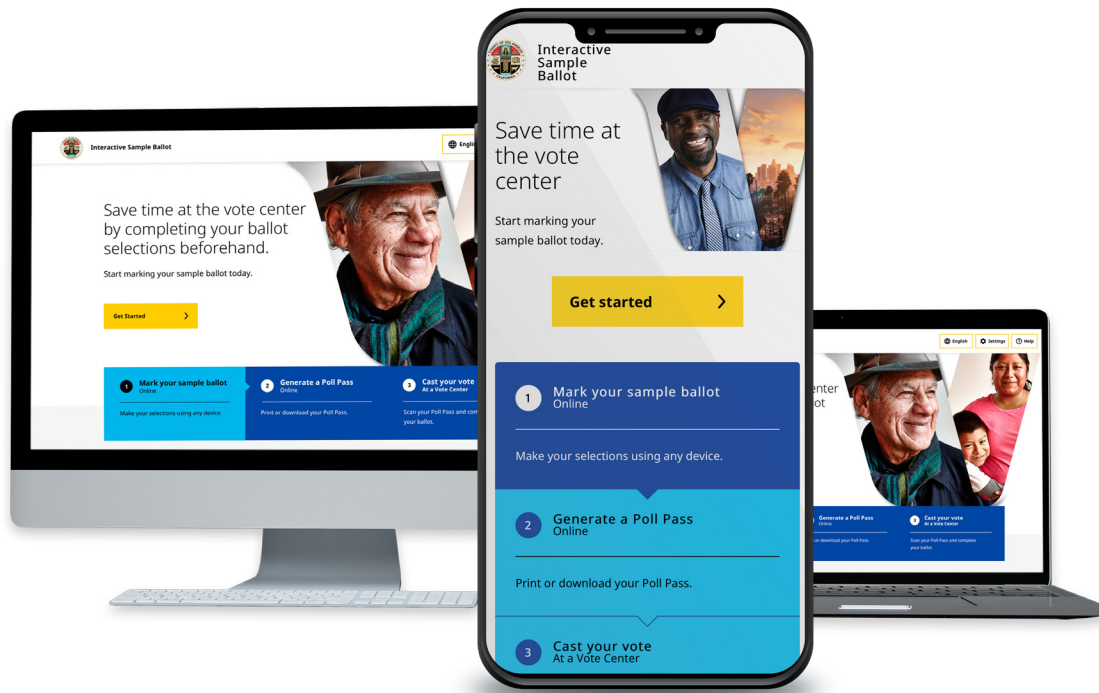
## 5. Review selections



## 6. Cast ballot



# SAVE TIME AT THE VOTE CENTER



## Interactive Sample Ballot

This election may include a large number of candidates appearing on the ballot. To ensure a timely and positive voting experience we encourage in-person voters to utilize the Interactive Sample Ballot (ISB). The ISB is a convenient option for voters who want to access and mark their selections prior to arriving at the Vote Center. Using a computer, mobile phone or personal device voters' can review their ballot information and make their selections. After going through the selection process the Interactive Sample Ballot creates a Poll Pass (QR code) – like an airline boarding pass.

At the Vote Center, voters scan the Poll Pass to transfer their selections to the Ballot Marking Device (BMD). Then, a review screen will display allowing voters a chance to make changes or cast their ballot.

Access your Interactive Sample Ballot at [LAVOTE.GOV/ISB](https://LAVOTE.GOV/ISB)

## Quick Check-in Code

Take the Quick Check-in Code on your Sample Ballot to any Vote Center. This allows Election Workers at the check-in table to quickly find and print your official ballot.

You can also access your Quick Check-in Code at [LAVOTE.GOV](https://LAVOTE.GOV)

# ELECTRONIC POLLBOOK



The Electronic Pollbook (ePollbook) has replaced the paper precinct list of voters and provides Los Angeles County and voters with a modern and secure check-in experience.

Election Workers now have the ability to update voter registration information in real-time allowing voters to visit any participating Vote Center in the Los Angeles County. Voters can securely update their registration information, leave their Vote by Mail ballot at home and still cast a standard in-person ballot, and eligible voters who missed the registration deadline can visit any Vote Center and cast a ballot through Conditional Voter Registration.

The ePollbooks are not connected the Ballot Marking Device or the Tally System to protect voter information and anonymity.

# VOTE BY MAIL AND EARLY VOTING OPTIONS

## Vote by Mail (VBM)

All registered voters in Los Angeles County have been issued a Vote by Mail ballot.

Voters can track the status of their mailed Vote by Mail ballot by subscribing to Where's My Ballot ([California.ballottrax.com](https://california.ballottrax.com)) free of charge. Real-time notifications are sent to text message, email, or voice message on the mailing of the ballot, and also notifies voters when their ballot is received and counted by the Registrar-Recorder/County Clerk.

Voters are encouraged to participate in the election by returning their Vote by Mail ballot by mail (no postage required) or dropping it off at any participating Ballot Drop Box or Vote Center.

---

## Ballot Drop Box

Los Angeles County has 400 Ballot Drop Boxes throughout the County to provide voters with a safe and secure alternative to return a Vote by Mail ballot. All Ballot Drop Boxes are available beginning 29 days prior to Election Day.

A list of Ballot Drop Boxes near the voter's home is included in the Vote by Mail packet. A full list of participating drop box locations and hours can be found on [LAVOTE.GOV](https://LAVOTE.GOV). All Ballot Drop Boxes will close at 8 PM on Election Day.

---

## Early Voting

Voters do not need to wait until Election Day to cast a ballot. The Registrar's Norwalk Headquarters is open for in-person voting 29 days before Election Day, and Vote Centers open as early as 10 days before Election Day. A full list of Vote Center locations will be available on [LAVOTE.GOV](https://LAVOTE.GOV).

---

## Conditional Voter Registration

Eligible voters who live in Los Angeles County and miss the registration deadline can still cast a ballot by visiting any participating Vote Center. Under California Election Law, Conditional Voter Registration (CVR) allows a prospective voter to conditionally register and cast a ballot. Once at a Vote Center, the voter will be handed a CVR ballot to mark their selections. When the voter is ready to cast, they will hand that ballot to the Election Worker to verify voter eligibility during the Official Canvass Period. Once the Registrar-Recorder/County Clerk verifies eligibility the ballot will be counted.

---

## Services for Voters with Specific Needs

Numerous election services are provided to voters with specific needs. Contact Special Services liaison Julia Keh at (562) 462-2754 or [jkeh@rrcc.lacounty.gov](mailto:jkeh@rrcc.lacounty.gov).



## TRANSPORTING BALLOTS FOR TABULATION



On Election Night, ballots from all Vote Centers are brought to the Registrar-Recorder/County Clerk's (RR/CC) Tally Operation Center (TOC) in Downey for central tabulation.

After the Vote Centers close at 8 PM, Election Workers will secure the voted ballots in sealed ballot boxes and account for unused ballots. Election Workers will also separately package Vote by Mail ballots that were dropped off at the Vote Centers and provisional ballots. All materials and quantities are accounted for in the Official Ballot Statement. Then Election Workers transport the ballots to designated Check-In Centers located throughout the County.

Sheriff Deputies transport the voted ballots from the Check-in Centers by car, helicopter or boat to Downey. Ballots come in from as far away as Lancaster, Palmdale and Catalina Island.

Between 10:30 – 11:30 PM a large number of ballots begin to arrive at the RR/CC Tally Operation Center.

Prior to tabulation, all ballots must be checked in, removed from boxes, inspected and prepared for counting.

Ballots are moved to the tabulation center in a continuous flow. There, operators load the ballots onto scanners for tabulation.

# CANVASS: FINALIZING THE VOTE

## Election Night

After Vote Centers close at 8:00 PM on Election Day, all voted ballots are sealed, secured and transported by Sheriff's deputies to be centrally tabulated at the RR/CC Tally Operation Center: 9150 Imperial Hwy., Downey, CA 90242. Election Night counts include ballots at the Vote Centers as well as Vote by Mail ballots received and processed up until Monday before Election Day.

## Finalizing the Official Vote Tally (Canvass)

Counting ballots does not end on Election Night. The Registrar's office makes sure all ballots cast are counted. After Election Night there are tens of thousands of ballots that need to be counted, including Vote by Mail ballots received on Election Day, provisional ballots, write-in ballots, and damaged ballots. These ballots are counted during the 30-day period known as the Official Election Canvass. Provisional ballots require additional review to verify voters are eligible to vote and write-in ballots were cast for qualified candidates.

California state law requires the RR/CC to complete and certify the results within 30 days. This provision of the law recognizes the complexity of completing the ballot count and conducting a thorough audit of the election results to ensure accuracy.

The legally mandated processes described above are utilized to guarantee that every eligible vote is counted and included in the official final election returns.

## Auditing the Election Results

By law, a random sample of ballots from every election must be manually tallied to verify Election Night machine counts. A minimum of all votes cast in one percent (1%) of the precincts is included in this process, which is known as the 1% Manual Tally Audit. The 1% Manual Tally Audit is open to the public. (E.C. 15360)

## Public Observation

Every citizen has the right to observe the Official Election Canvass process. Candidates and the public are invited to observe the ballot counting and auditing process by joining the Election Observer Program. The program is part of Los Angeles County's commitment to conducting open and transparent elections.

Election observers have the opportunity to observe the logic and accuracy testing of the election systems equipment, Vote by Mail ballot processing, Election Day activities at Vote Centers and Check-in Centers, tally center operations and post-election processing.

To learn more, the Election Observer Panel Plan is available online at [LAVOTE.GOV](https://www.lavote.gov).

# ELECTION CANVASS SCHEDULE

**Ballot counting updates begin at 1 PM, and results are reported approximately between 4 PM - 5 PM.**

Outstanding ballot counting takes place throughout the canvass period.

NOVEMBER

**11**

**First Ballot Counting Update**

NOVEMBER

**15**

**Second Ballot Counting Update**

NOVEMBER

**18**

**Third Ballot Counting Update**

NOVEMBER

**22**

**Fourth Ballot Counting Update**

NOVEMBER

**25**

**Fifth Ballot Counting Update**

NOVEMBER

**29**

**Sixth Ballot Counting Update**

DECEMBER

**2**

**Seventh Ballot Counting Update**

## Key Dates

NOVEMBER

**10**

**The Official Canvass begins**

DECEMBER

**5**

**The RR/CC is tentatively scheduled to certify election results**

# REQUESTING A RECOUNT

## Who can request a recount?

Any voter of the state may file a request (E.C. § 15620). For more information download our booklet at [LAVOTE.GOV](https://www.lavote.gov).

## Timing of Request

The request must be filed within five (5) calendar days, after the completion of the official canvass. The RR/CC is not open on weekends or holidays. If the deadline falls on the weekend or holiday, the date will be moved to the next business day (E.C. § 15).

## Exceptions

- For statewide recount contests, the request may be filed with the Secretary of State's Office within five (5) days beginning on the 31st day after the election (E.C. § 15621).
- If election is conducted in more than one county the request may be filed within five (5) days beginning on the 31st day after the election (E.C. § 15620).

## Notice of Recount

A notice stating the date and place of the recount will be posted by the elections official at least one day prior to the recount and the following persons will be notified in person or by telegram (E.C. § 15628).

Notices are issued to the following parties:

- All candidates for the office being recounted.
- Authorized representatives for presidential candidates, if the race for presidential delegates is to be recounted.
- Proponents of any initiative or referendum or persons filing ballot arguments for or against any initiative, referendum or measure to be recounted.
- Secretary of State if the recount is for candidates for any state or federal office, delegates to a national convention, or any state measure.

## MEDIA & COMMUNICATIONS



### Visiting a Vote Center

The voting period and Election Day is an exciting time. Reporters, journalists and various media representatives may visit any Vote Center to take photos and videos of voting activities with advanced consent.

Media members must contact [mediainfo@rrcc.lacounty.gov](mailto:mediainfo@rrcc.lacounty.gov) before arriving to a Vote Center.

#### COVID-19 Guidelines:

- Masks are strongly encouraged
- Maintain 6 feet social distancing
- All interviews must be conducted outside



### Media Can Take Photos and Videos of:

- The exterior of Ballot Marking Devices (BMDs) while occupied
- The interior of a BMD if unoccupied
- The interior of the Vote Center
- Voters and/or Election Workers with their permission
- Election Workers, Sheriff's Deputies and other County employees processing and/or transporting the ballots in bags, carts and government vehicles
- Conduct voter interviews - must have permission from the voter and must be conducted outside at a minimum of 25 feet from the Vote Center entrance



### Media Cannot Take Photos and Videos of:

- The interior of Ballot Marking Devices (BMDs) while occupied by voters
- Voted ballots before they are deposited inside the BMD (this violates voter's privacy)
- Voters and/or Election Workers without their permission
- Interview voters inside the Vote Center
- Interview Election Workers



### Additional Information

- Election Night results will be available at [LAVOTE.GOV](http://LAVOTE.GOV). The first results will include Vote by Mail and Vote Center ballots received prior to Election Day. These results will be issued at approximately 8:15 PM. Results will be updated on the website on a flow basis as Vote Center ballots from Election Day are received, processed, and tabulated.
- Activities construed as "Electioneering\*" are prohibited within 100 feet of the Vote Center.

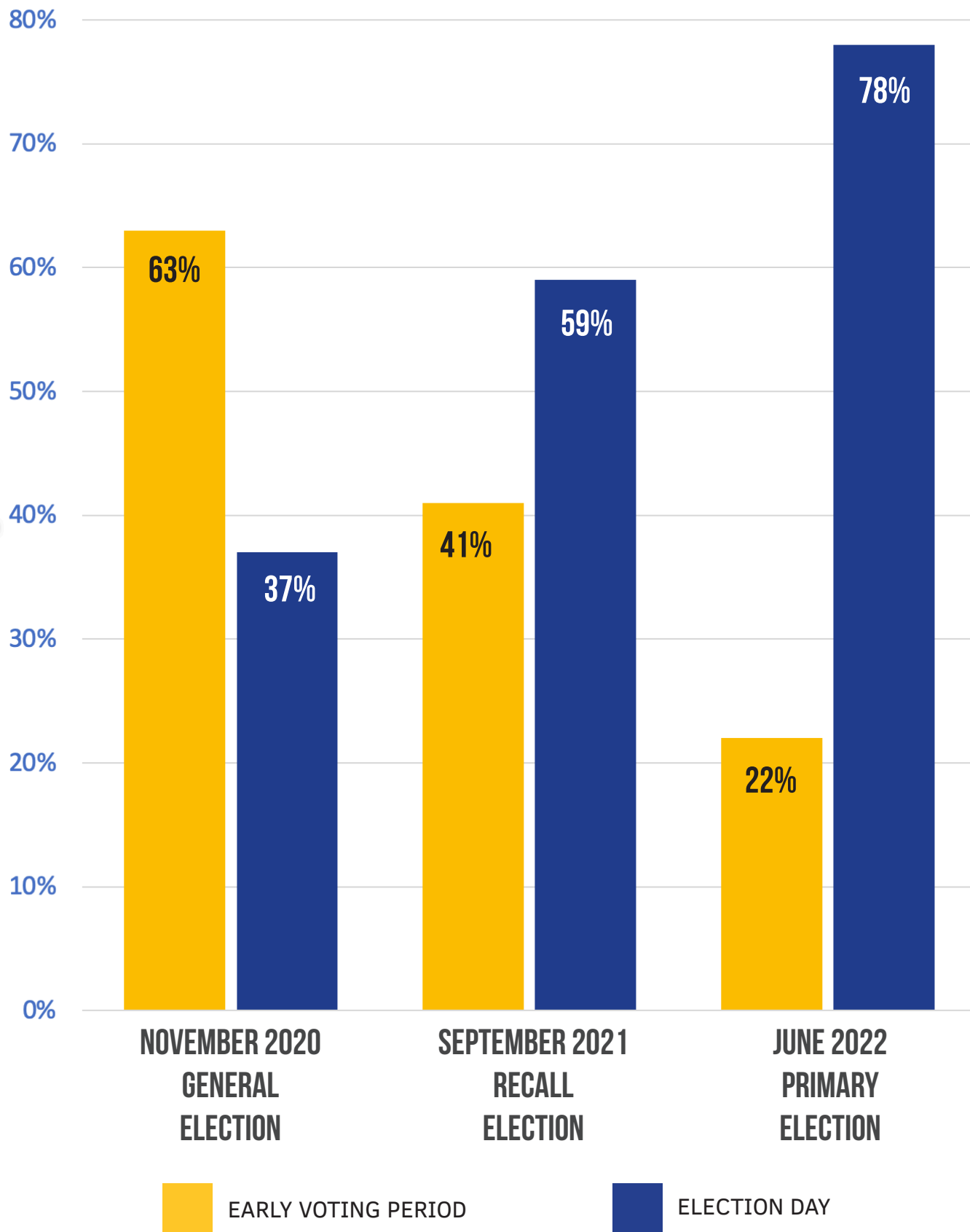
\*Electioneering: The practice of working actively to secure votes for a candidate or ballot measure in an election.

**Still have questions? Contact the Registrar's Media Section at (562) 462-2833**

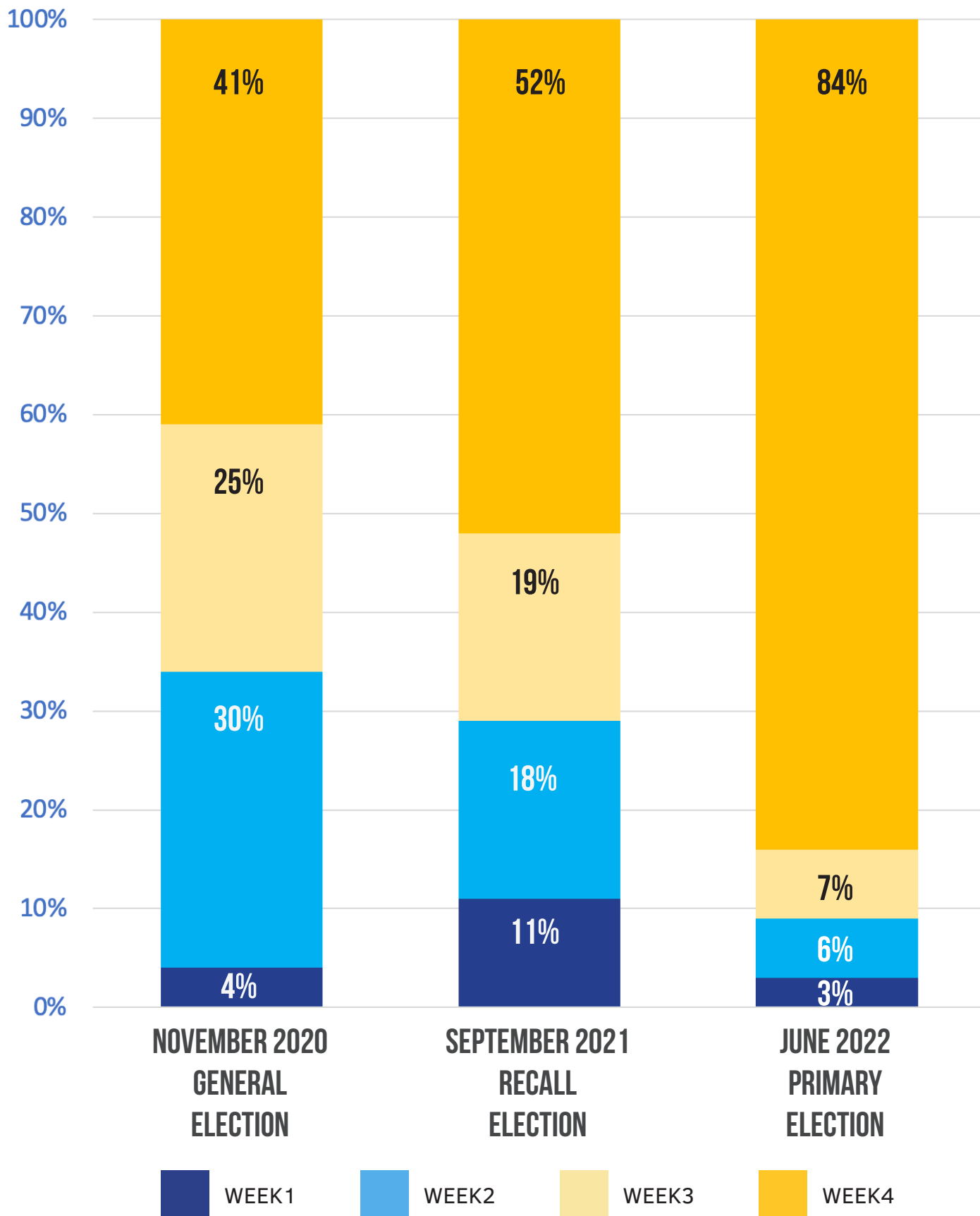
# VOTER TURNOUT IN LOS ANGELES COUNTY



# VOTE CENTER TURNOUT



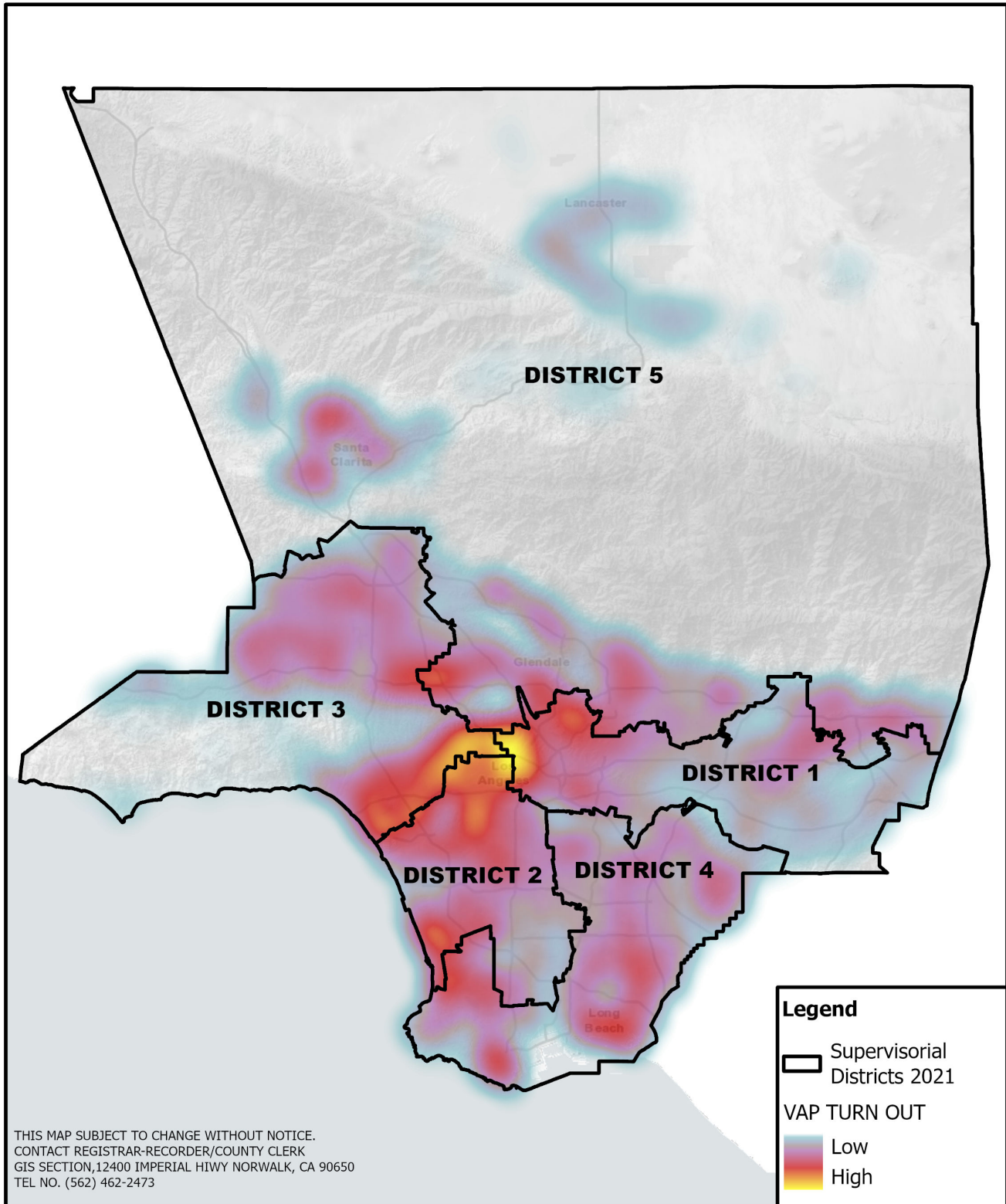
# BALLOT DROP BOX RETURNS





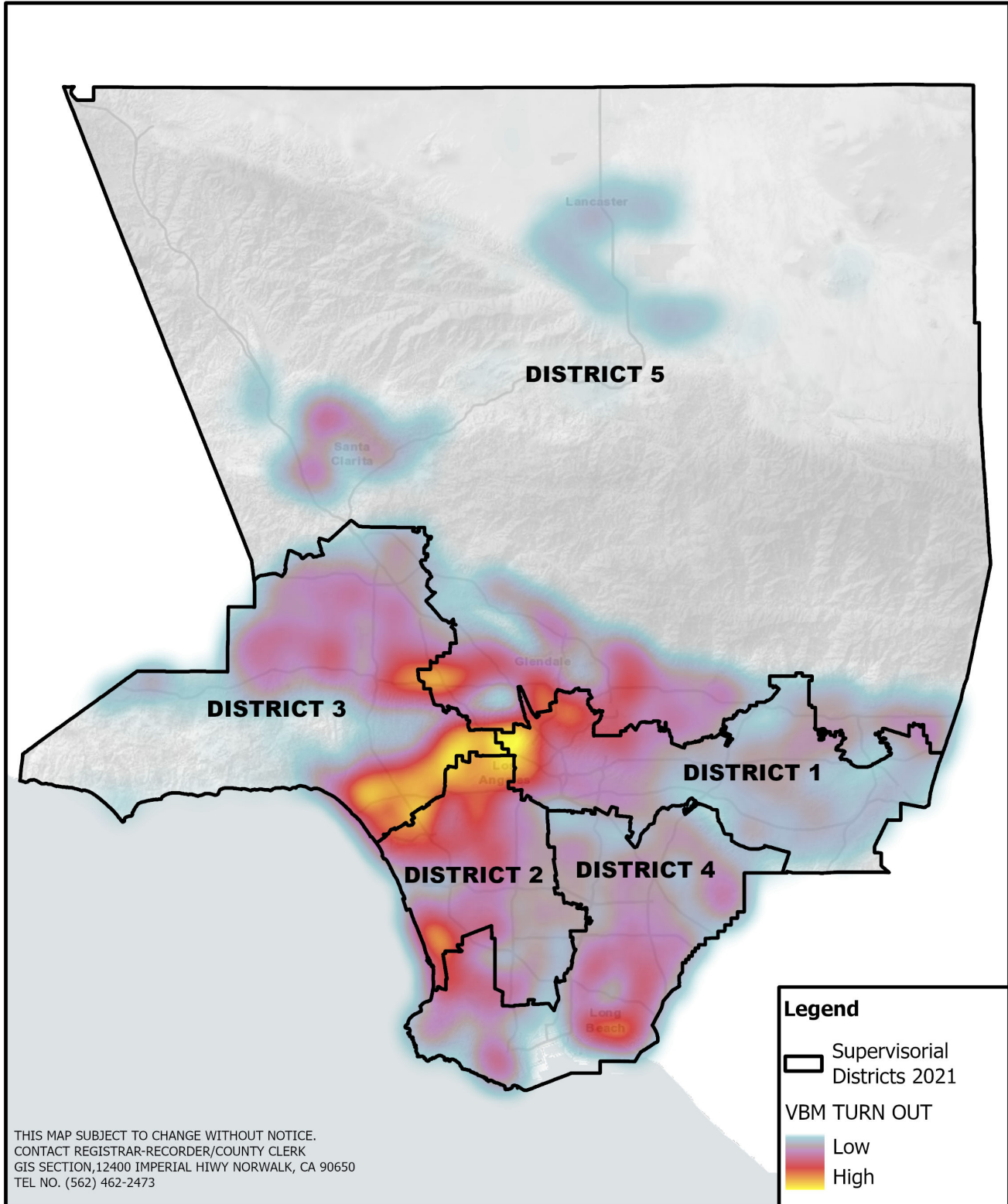
# VOTE CENTER OVERALL TURNOUT

## June 2022 Primary Election



# VOTE BY MAIL OVERALL TURNOUT

## June 2022 Primary Election



THIS MAP SUBJECT TO CHANGE WITHOUT NOTICE.  
CONTACT REGISTRAR-RECORDER/COUNTY CLERK  
GIS SECTION, 12400 IMPERIAL HIWY NORWALK, CA 90650  
TEL NO. (562) 462-2473