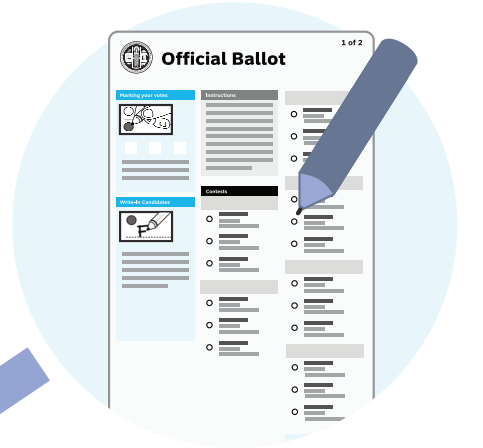


# What happens to my ballot when I vote by mail?



Voter receives their ballot, marks their selections, and signs Return Envelope

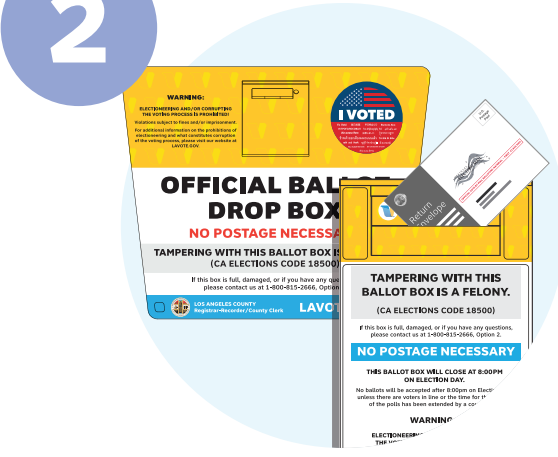
Voter returns ballot using one of three secure options:

1



U.S. Mail  
(No postage required)

2



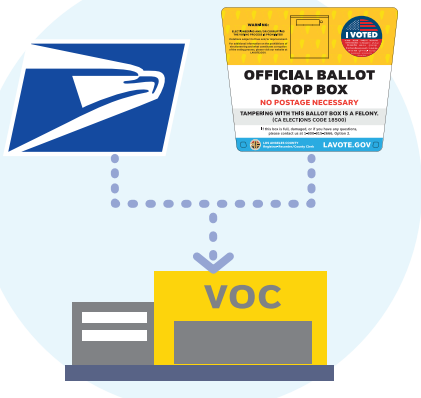
Official Ballot Drop Box

3



Vote Center

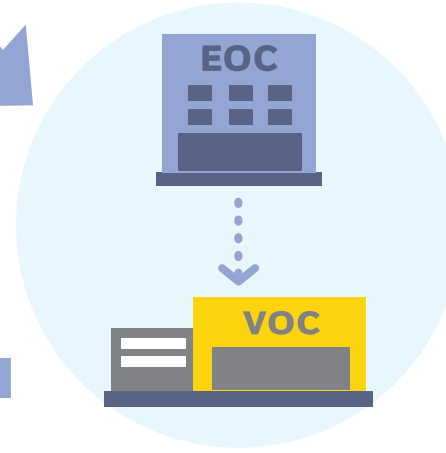
Election Workers pick up ballots daily from Ballot Drop Boxes and USPS and transport them to the Vote by Mail Operation Center



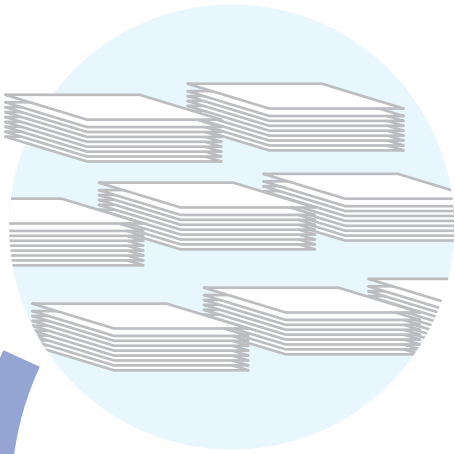
After the Vote Center closes, Election Workers transport ballots to the Election Operation Center for secure overnight storage



The following day, Election Workers transport ballots to the Vote by Mail Operation Center



Once at the Vote by Mail Operation Center ballots are processed and sorted



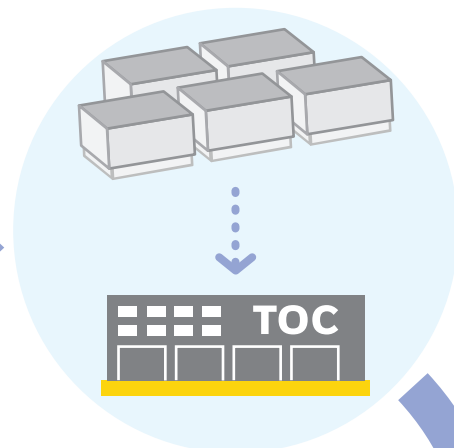
Ballots are verified with the voter's signature on the Return Envelope



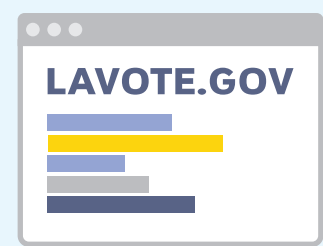
Once verified, the ballot is removed from the Return Envelope and inspected for damages, sorted, and boxed



Ballots are transported to the Tally Operation Center



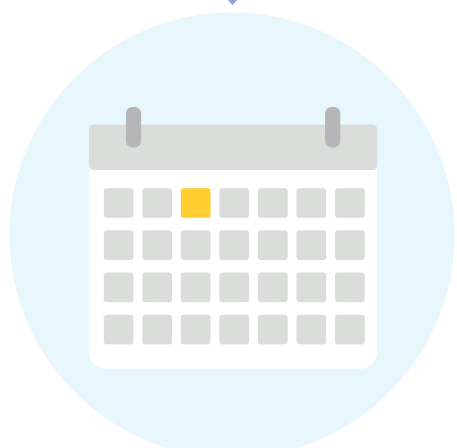
Election results are automatically updated to LAVOTE.GOV



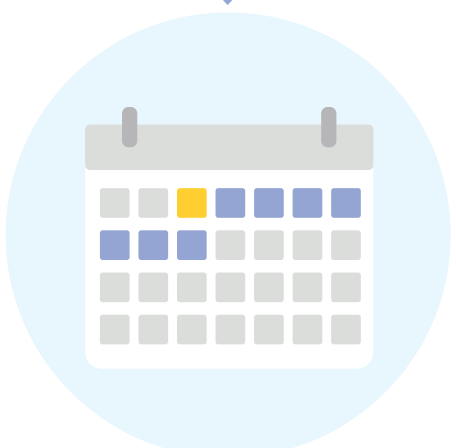
Vote by Mail ballots are tallied and results are tabulated



Vote by Mail ballots returned by Ballot Drop Box on Election Day will be tallied during the Official Election Canvass



Vote by Mail ballots postmarked by Election Day and returned by mail will be accepted if received within 7 days of the Election



Certified election results are announced and reported within 30 days of Election Day

