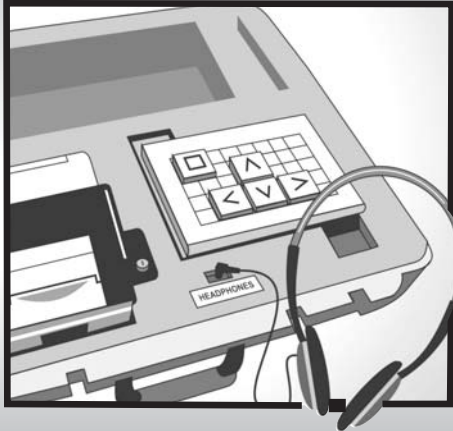
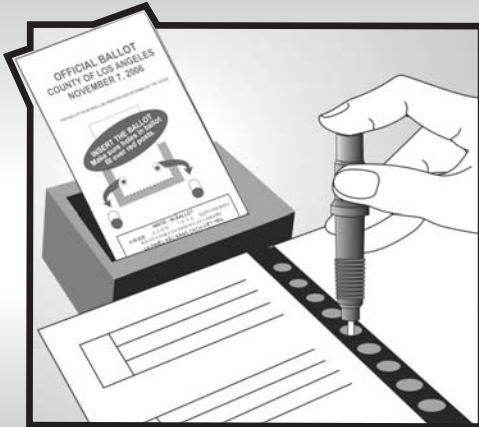




ELECTION TRAINING CLASS SCHEDULE



CLERKS Only

November 8, 2016 General Election



**Los Angeles County
REGISTRAR-RECORDER/COUNTY CLERK**



Los Angeles County Registrar-Recorder/County Clerk

DEAN C. LOGAN

Registrar-Recorder/County Clerk

Dear Pollworker:

The Los Angeles County Registrar-Recorder/County Clerk would like to thank you for your participation in volunteering as a Pollworker for the November 8, 2016 Presidential General Election. Your involvement greatly contributes to conducting successful elections for the citizens of Los Angeles County.

This booklet contains the schedule of Clerk training classes for the November 8, 2016 Presidential General Election. The classes listed are for **Clerks only**. Inspectors will be mailed a separate schedule that lists locations and times for Inspector classes.

To assist you in selecting the most convenient class for you to attend, the schedule is arranged by:

- The dates the classes will be held throughout the County.
- Alphabetical order of cities and communities (refer to alphabetical listing beginning on page V).

Remember, attending Pollworker training is important. Although Clerks are not required to attend training, it is highly recommended that you attend a class in preparation for your Election Day assignment. Additionally, you will receive a \$25 stipend for attending a training class.

Please remember to bring your attendance slip when attending training and turn it in at the end of the class so that you may receive credit for attending. Your attendance slip is located at the bottom of your Appointment Letter. Any questions regarding your appointment should be directed to the Polls Section (*refer to the phone number on your Appointment Letter*).

In an effort to accommodate Pollworkers, we try to schedule trainings throughout Los Angeles County; therefore, we hope you find a convenient location to attend. Once again, we thank you for your dedication and we look forward to seeing you in training class.

Sincerely,
Elizabeth Bejarano
Election Training Manager



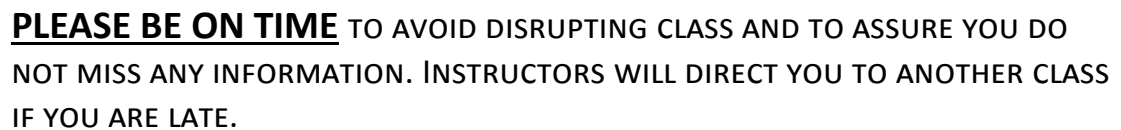
WHAT'S INSIDE

- **IMPORTANT INFORMATION** **PAGE IV**
- **TABLE OF CONTENTS FOR LOCATIONS** **PAGE V**
(PAGE XVI REFERENCES LOCATIONS THAT WILL HAVE A LANGUAGE INTERPRETER.)
- **CLASS SCHEDULE DETAILS** **PAGE 1**
- **HALL OF ADMINISTRATION MAP** **PAGE 48**
- **SUMMARY OF DUTIES** **PAGE 49**
- **TELEPHONE DIRECTORY** **PAGE 50**
- **QUESTIONS/CONTACT PAGE** **BACK PAGE**



*AVOID THE CROWD...
FIRST TWO WEEKS ARE **BEST!!!***

- **RESERVATIONS** ARE NEITHER REQUIRED OR ACCEPTED.
- YOU MAY ATTEND A CLASS AT ANY LOCATION.
- YOU MAY ATTEND AS MANY CLASSES AS YOU LIKE.
HOWEVER, YOU WILL ONLY BE COMPENSATED FOR ONE CLASS.



ATTENDANCE SLIPS WILL BE COLLECTED AT THE END OF THE CLASS. PLEASE SCHEDULE YOUR TIME SO YOU MAY STAY UNTIL THE END OF CLASS. **YOU WILL NOT RECEIVE CREDIT FOR ATTENDING A CLASS IF YOU LEAVE EARLY.**

YOU WILL NEED TO TURN IN THE ATTENDANCE SLIP LOCATED AT THE BOTTOM OF YOUR APPOINTMENT NOTICE WHEN YOU ATTEND CLASS.

Table of Contents

Location	Page	Quick Date Reference
ACTON	1	Oct 5 (Wed)
ALHAMBRA	35	Oct 30 (Sun)
ALTADENA	11	Oct 15 (Sat)
ALTADENA	22	Oct 22 (Sat)
ARCADIA	6	Oct 11 (Tue)
ARCADIA	16	Oct 18 (Tue)
ARTESIA	15	Oct 17 (Mon)
AZUSA	19	Oct 20 (Thu)
BALDWIN PARK	15	Oct 17 (Mon)
BELL GARDENS	43	Nov 4 (Fri)
BELLFLOWER	4	Oct 10 (Mon)
BELLFLOWER	27	Oct 25 (Tue)
BEVERLY HILLS	13	Oct 16 (Sun)
BEVERLY HILLS	35	Oct 30 (Sun)

Table of Contents

Location	Page	Quick Date Reference
BURBANK	8	Oct 13 (Thu)
BURBANK	25	Oct 24 (Mon)
CALABASAS	3	Oct 7 (Fri)
CARSON	16	Oct 18 (Tue)
CARSON	36	Oct 31 (Mon)
CERRITOS	38	Nov 1 (Tue)
CHATSWORTH	27	Oct 25 (Tue)
CITY OF INDUSTRY	15	Oct 17 (Mon)
CLAREMONT	27	Oct 25 (Tue)
COMPTON	24	Oct 23 (Sun)
COMPTON	46	Nov 6 (Sun)
COVINA	2	Oct 6 (Thu)
COVINA	30	Oct 27 (Thu)
CULVER CITY	33	Oct 29 (Sat)

Table of Contents

Location	Page	Quick Date Reference
DIAMOND BAR	39	Nov 2 (Wed)
DOWNEY	3	Oct 7 (Fri)
DOWNEY	37	Oct 31 (Mon)
EL MONTE	2	Oct 6 (Thu)
EL SEGUNDO	7	Oct 12 (Wed)
ENCINO	2	Oct 6 (Thu)
GARDENA	33	Oct 29 (Sat)
GLENDALE	6	Oct 11 (Tue)
GLENDALE	38	Nov 1 (Tue)
GLENDORA	1	Oct 5 (Wed)
GLENDORA	28	Oct 26 (Wed)
HACIENDA HEIGHTS	46	Nov 6 (Sun)
HAWAIIAN GARDENS	7	Oct 12 (Wed)
HAWTHORNE	17	Oct 18 (Tue)

Table of Contents

Location	Page	Quick Date Reference
HAWTHORNE	44	Nov 5 (Sat)
HERMOSA BEACH	21	Oct 21 (Fri)
HUNTINGTON PARK	28	Oct 26 (Wed)
INGLEWOOD	17	Oct 18 (Tue)
INGLEWOOD	38	Nov 1 (Tue)
LA CAÑADA-FLINTRIDGE	21	Oct 21 (Fri)
LA CRESCENTA	10	Oct 14 (Fri)
LA MIRADA	26	Oct 24 (Mon)
LA PUENTE	7	Oct 12 (Wed)
LAKEWOOD/LONG BEACH	12	Oct 15 (Sat)
LAKEWOOD/LONG BEACH	34	Oct 29 (Sat)
LONG BEACH	3	Oct 7 (Fri)
LONG BEACH	30	Oct 27 (Thu)
LONG BEACH	40	Nov 2 (Wed)

Table of Contents

Location	Page	Quick Date Reference
LONG BEACH (North)	8	Oct 12 (Wed)
LONG BEACH (North)	22	Oct 22 (Sat)
LONG BEACH (North)	31	Oct 28 (Fri)
LOS ANGELES (Downtown)	9	Oct 13 (Thu)
LOS ANGELES (Downtown)	29	Oct 26 (Wed)
LOS ANGELES (East)	18	Oct 19 (Wed)
LOS ANGELES (Hollywood Hills)	39	Nov 1 (Tue)
LOS ANGELES (Lincoln Heights)	24	Oct 23 (Sun)
LOS ANGELES (Los Feliz)	12	Oct 15 (Sat)
LOS ANGELES (Mid-Wilshire)	26	Oct 24 (Mon)
LOS ANGELES (Mid-Wilshire)	43	Nov 4 (Fri)
LOS ANGELES (South)	6	Oct 11 (Tue)
LOS ANGELES (South)	21	Oct 21 (Fri)
LOS ANGELES (South)	30	Oct 27 (Thu)

Table of Contents

Location	Page	Quick Date Reference
LOS ANGELES (South)	41	Nov 3 (Thu)
LOS ANGELES (West)	37	Oct 31 (Mon)
LOS ANGELES (West)	45	Nov 5 (Sat)
LOS ANGELES (West Adams)	40	Nov 2 (Wed)
LOS ANGELES (Westchester)	4	Oct 7 (Fri)
LYNWOOD	1	Oct 5 (Wed)
LYNWOOD	18	Oct 19 (Wed)
MALIBU	35	Oct 30 (Sun)
MANHATTAN BEACH	5	Oct 10 (Mon)
MISSION HILLS	32	Oct 28 (Fri)
MISSION HILLS	47	Nov 6 (Sun)
MONROVIA	12	Oct 15 (Sat)
MONTEBELLO	10	Oct 14 (Fri)
MONTEBELLO	26	Oct 24 (Mon)

Table of Contents

Location	Page	Quick Date Reference
MONTEREY PARK	43	Nov 4 (Fri)
NORTH HOLLYWOOD	13	Oct 16 (Sun)
NORTH HOLLYWOOD	36	Oct 30 (Sun)
NORTHRIDGE	10	Oct 14 (Fri)
NORTHRIDGE	32	Oct 28 (Fri)
NORWALK	24	Oct 23 (Sun)
NORWALK	47	Nov 6 (Sun)
PACOIMA	14	Oct 16 (Sun)
PACOIMA	36	Oct 30 (Sun)
PALMDALE	18	Oct 19 (Wed)
PALMDALE	40	Nov 2 (Wed)
PALOS VERDES PENINSULA	5	Oct 10 (Mon)
PALOS VERDES PENINSULA	19	Oct 19 (Wed)
PALOS VERDES PENINSULA	39	Nov 1 (Tue)

Table of Contents

Location	Page	Quick Date Reference
PANORAMA CITY	25	Oct 23 (Sun)
PARAMOUNT	14	Oct 16 (Sun)
PARAMOUNT	34	Oct 29 (Sat)
PASADENA	34	Oct 29 (Sat)
PASADENA	45	Nov 5 (Sat)
POMONA	9	Oct 13 (Thu)
POMONA	41	Nov 3 (Thu)
QUARTZ HILL	13	Oct 15 (Sat)
QUARTZ HILL	23	Oct 22 (Sat)
REDONDO BEACH	9	Oct 13 (Thu)
REDONDO BEACH	20	Oct 20 (Thu)
REDONDO BEACH	42	Nov 3 (Thu)
RESEDA	44	Nov 4 (Fri)
ROSEMEAD	26	Oct 24 (Mon)

Table of Contents

Location	Page	Quick Date Reference
ROWLAND HEIGHTS	44	Nov 4 (Fri)
SAN DIMAS	31	Oct 27 (Thu)
SAN FERNANDO	20	Oct 20 (Thu)
SAN FERNANDO	45	Nov 5 (Sat)
SAN PEDRO	20	Oct 20 (Thu)
SAN PEDRO	42	Nov 3 (Thu)
SANTA CLARITA	16	Oct 17 (Mon)
SANTA CLARITA	29	Oct 26 (Wed)
SANTA CLARITA	41	Nov 2 (Wed)
SANTA MONICA	19	Oct 19 (Wed)
SANTA MONICA	31	Oct 27 (Thu)
SHERMAN OAKS	4	Oct 7 (Fri)
SHERMAN OAKS	11	Oct 14 (Fri)
SOUTH PASADENA	29	Oct 26 (Wed)

Table of Contents

Location	Page	Quick Date Reference
SUNLAND	23	Oct 22 (Sat)
TEMPLE CITY	11	Oct 14 (Fri)
TEMPLE CITY	22	Oct 21 (Fri)
TORRANCE	22	Oct 21 (Fri)
TORRANCE	37	Oct 31 (Mon)
VAN NUYS	32	Oct 28 (Fri)
VAN NUYS	47	Nov 6 (Sun)
WALNUT	14	Oct 16 (Sun)
WALNUT	25	Oct 23 (Sun)
WEST COVINA	23	Oct 22 (Sat)
WEST COVINA	46	Nov 5 (Sat)
WEST HILLS	21	Oct 20 (Thu)
WEST HILLS	42	Nov 3 (Thu)
WEST HOLLYWOOD	17	Oct 18 (Tue)

Table of Contents

Location	Page	Quick Date Reference
WHITTIER	5	Oct 10 (Mon)
WHITTIER	33	Oct 28 (Fri)
WINNETKA/WOODLAND HILLS	8	Oct 12 (Wed)
WINNETKA/WOODLAND HILLS	28	Oct 25 (Tue)

Table of Contents

Location	Page	Quick Date Reference
LANGUAGE INTERPRETATION		
BENGALI		
HAWAIIAN GARDENS	7	Oct 12 (Wed)
CHINESE		
MONTEREY PARK	43	Nov 4 (Fri)
HINDI		
ARTESIA	15	Oct 17 (Mon)
JAPANESE		
TORRANCE	37	Oct 31 (Mon)
KHMER		
LONG BEACH	3	Oct 7 (Fri)
KOREAN		
LOS ANGELES (Mid-Wilshire)	26	Oct 24 (Mon)
SPANISH		
NORWALK	47	Nov 6 (Sun)
TAGALOG/FILIPINO		
CARSON	16	Oct 18 (Tue)
THAI		
NORTH HOLLYWOOD	36	Oct 30 (Sun)
VIETNAMESE		
EL MONTE	2	Oct 6 (Thu)

City/Address	Date/Time
--------------	-----------

***Clerks must attend a "Clerks Class" to receive stipend.
If you are late, you will not be admitted.***

ACTON

October 5 (Wednesday)

Acton Community Club

2:30 pm to 4:30 pm

3748 Nickels Avenue

(SE corner of intersection of Nickels Ave. & 2nd St.)

93510

Note: *Classes will be held in the Community Club. Parking in 2 lots, enter one from corner of Nickels Ave. & 2nd St. Enter second lot from Smith Ave. at 3rd St. Please DO NOT CALL FACILITY. Refer to the numbers on the back of schedule.*

GLENDORA

October 5 (Wednesday)

Glendora Public Library

1:30 pm to 3:30 pm

140 South Glendora Avenue

(Between Carroll Ave. & E. Foothill Blvd.)

91741

Note: *Classes will be held in the Bidwell Forum Room on 2nd Floor. Please DO NOT CALL FACILITY. Refer to the numbers on the back of schedule.*

LYNWOOD

October 5 (Wednesday)

Bateman Hall

1:30 pm to 3:30 pm

11331 Ernestine Avenue

(On NW corner of intersection of Harriet Tubman
Wy. & Ernestine Ave.)

90262

Note: *Classes will be held in Room 2. Please DO NOT CALL FACILITY. Refer to the numbers on the back of schedule.*

City/Address	Date/Time
--------------	-----------

***Clerks must attend a "Clerks Class" to receive stipend.
If you are late, you will not be admitted.***

COVINA

October 6 (Thursday)

Covina United Methodist Church
437 West San Bernardino Road
(Between N. Hollenbeck Ave. & N. 5th St.)
91723

1:00 pm to 3:00 pm

Note: *Classes will be held in Dougherty Hall. Please DO NOT CALL FACILITY. Refer to the numbers on the back of schedule.*

EL MONTE

October 6 (Thursday)

Lambert Park
11431 McGirk Avenue
(Between N. Peck Rd. & Cedar Ave.)
91731

1:30 pm to 3:30 pm VIETNAMESE INTERPRETER

Note: *Classes will be held in the Auditorium. Please DO NOT CALL FACILITY. Refer to the numbers on the back of schedule.*

ENCINO

October 6 (Thursday)

First Presbyterian Church of Encino
4963 Balboa Boulevard
(Between Ventura Blvd. & Addison St.)
91316

1:30 pm to 3:30 pm

Note: *Classes will be held in the Fellowship Hall. Street parking available on Addison St. Be aware of "Kid Zone." Please DO NOT CALL FACILITY. Refer to the numbers on the back of schedule.*

City/Address	Date/Time
--------------	-----------

***Clerks must attend a "Clerks Class" to receive stipend.
If you are late, you will not be admitted.***

CALABASAS

October 7 (Friday)

Las Virgenes Municipal Water District
4232 Las Virgenes Road
(Between Meadow Creek Ln. & Agoura Rd.)
91302

1:30 pm to 3:30 pm

Note: *Classes will be held in the Board Room. Please park in front of, and behind the building on the left as you turn in off of Las Virgenes Rd. No parking in front of the building on the right (where the classes will be held). Please DO NOT CALL FACILITY. Refer to the numbers on the back of schedule.*

DOWNEY

October 7 (Friday)

Woman's Club of Downey
9813 Paramount Boulevard
(Between Florence Ave. & Suva St.)
90240

2:30 pm to 4:30 pm

Note: *Classes will be held in the Auditorium. Entrance to parking lot is off of Lubec St. Please DO NOT CALL FACILITY. Refer to the numbers on the back of schedule.*

LONG BEACH

October 7 (Friday)

Our Saviour's Lutheran Church
370 Junipero Avenue
(On NE corner of Junipero Ave. & Carroll Park N.)
90814

1:30 pm to 3:30 pm KHMER INTERPRETER

Note: *Classes will be held in the Bjerke Fellowship Hall. Enter Fellowship Hall from Carroll Park N. Parking in church lot, enter from Carroll Park N. Street parking available. Please DO NOT CALL FACILITY. Refer to the numbers on the back of schedule.*

***Clerks must attend a "Clerks Class" to receive stipend.
If you are late, you will not be admitted.***

LOS ANGELES (Westchester)**October 7 (Friday)**

Council Office of Mike Bonin
7166 West Manchester Boulevard
(Between Lincoln Blvd. & Loyola Blvd.)
90045

1:30 pm to 3:30 pm

Note: *Classes will be held in the Westchester Community Room. Please DO NOT CALL FACILITY. Refer to the numbers on the back of schedule.*

SHERMAN OAKS**October 7 (Friday)**

Sherman Oaks Lutheran Church
14847 Dickens Street
(On NW corner of intersection of Kester Ave. &
Dickens St.)
91403

1:30 pm to 3:30 pm

Note: *Classes will be held in the Fellowship Hall. Parking in lot. Street parking available on Dickens St. west of Kester Ave. and on Kester Ave. south of Dickens St. unmetered, but watch for any restrictions. Please DO NOT CALL FACILITY. Refer to the numbers on the back of schedule.*

BELLFLOWER**October 10 (Monday)**

Bethany Christian Reformed Church
17054 Bixby Avenue
(On NE corner of intersection of Park St. & Bixby
Ave.)
90706

1:30 pm to 3:30 pm

Note: *Classes will be held in the Friendship Center (North Side). Please DO NOT CALL FACILITY. Refer to the numbers on the back of schedule.*

City/Address	Date/Time
--------------	-----------

***Clerks must attend a "Clerks Class" to receive stipend.
If you are late, you will not be admitted.***

MANHATTAN BEACH

October 10 (Monday)

Cornerstone Christian Fellowship

1:30 pm to 3:30 pm

300 North Redondo Avenue

(On NE Corner of intersection of 3rd St. & N.
Redondo Ave.)

90266

Note: *Classes will be held in the Sanctuary. Please DO NOT CALL FACILITY. Refer to the numbers on the back of schedule.*

PALOS VERDES PENINSULA

October 10 (Monday)

South Coast Botanic Garden

1:30 pm to 3:30 pm

26300 Crenshaw Boulevard

(Between Palos Verdes Dr. North & Rolling Hills
Rd.)

90274

Note: *Classes will be held in the Francis Young Hall. Smoking is not permitted ANYWHERE on the property, inside or outside, including parking lots. Access to Pollworker classes DOES NOT include access to gardens, except by separate ticket purchased from the Garden Ticket Booth. Please DO NOT CALL FACILITY. Refer to the numbers on the back of schedule.*

WHITTIER

October 10 (Monday)

East Whittier United Methodist Church

1:30 pm to 3:30 pm

10005 South Cole Road

(Between Lambert Rd. & Whittier Blvd.)

90603

Note: *Classes will be held in the Fellowship Hall. Please DO NOT CALL FACILITY. Refer to the numbers on the back of schedule.*

***Clerks must attend a "Clerks Class" to receive stipend.
If you are late, you will not be admitted.***

ARCADIA**October 11 (Tuesday)**

Arcadia Public Library

1:30 pm to 3:30 pm

20 West Duarte Road

(On SW corner of intersection of S. Santa Anita
Ave. & E. Duarte Rd.)

91006

Note: *Classes will be held in the Cay Mortenson Auditorium. Four hour parking available in the West Parking Lot. Please follow parking restrictions. Disclaimer: "This program is not sponsored by the Arcadia Public Library." Please DO NOT CALL FACILITY. Refer to the numbers on the back of schedule.*

GLENDALE**October 11 (Tuesday)**

First Congregational Church of Glendale

1:30 pm to 3:30 pm

2001 Cañada Boulevard

(On SW corner of Cañada Bl. & Wabasso Wy.)

91208

Note: *Classes will be held in the Fellowship Hall. Please DO NOT CALL FACILITY. Refer to the numbers on the back of schedule.*

LOS ANGELES (South)**October 11 (Tuesday)**

House of God Apostolic Church

3:00 pm to 5:00 pm

1740 West 59th Street

(Just west of intersection of W. 59th St. & S.
Western Ave.)

90047

Note: *Classes will be held in the Sanctuary. Small parking lot next to church. Larger dirt lot available around the corner. Enter off of S. Western Ave. between W. 59th St. and W. 59th Pl. on east side of the street. Please DO NOT CALL FACILITY. Refer to the numbers on the back of schedule.*

City/Address	Date/Time
--------------	-----------

***Clerks must attend a "Clerks Class" to receive stipend.
If you are late, you will not be admitted.***

EL SEGUNDO

October 12 (Wednesday)

United Methodist Church of El Segundo

1:30 pm to 3:30 pm

540 Main Street

(On the SW corner of the intersection of Main St. &
E. Mariposa Ave.)

90245

Note: Classes will be held in Johnson Hall. Enter parking lot through the alley from E. Mariposa Ave., along the west side of the church. Street parking also available, but there may be a time restriction of 2 hours in some areas. Please DO NOT CALL FACILITY. Refer to the numbers on the back of schedule.

HAWAIIAN GARDENS

October 12 (Wednesday)

C. Robert Lee Activity Center

2:30 pm to 4:30 pm BENGALI INTERPRETER

21815 Pioneer Boulevard

(Between Carson St. & 221st St.)

90716

Note: Classes will be held in Meeting Room B at south end of Senior Center. Please DO NOT CALL FACILITY. Refer to the numbers on the back of schedule.

LA PUENTE

October 12 (Wednesday)

Bassett Park

1:30 pm to 3:30 pm

510 Vineland Avenue

(Between Nelson Ave. & Baldwin Park Blvd.)

91746

Note: Classes will be held in the Community Room. Please DO NOT CALL FACILITY. Refer to the numbers on the back of schedule.

City/Address	Date/Time
--------------	-----------

***Clerks must attend a "Clerks Class" to receive stipend.
If you are late, you will not be admitted.***

LONG BEACH (North)	October 12 (Wednesday)
Veterans Park 101 East 28th Street (East of Pacific Ave.) 90806	5:30 pm to 7:30 pm

Note: *Classes will be held in the Social Hall. Parking in lot. Please DO NOT CALL FACILITY. Refer to the numbers on the back of schedule.*

WINNETKA/WOODLAND HILLS	October 12 (Wednesday)
Disabled American Veterans Post #73 6543 Corbin Avenue (Between Vanowen St. & Victory Blvd.) 91367	1:30 pm to 3:30 pm

Note: *Classes will be held in the Meeting Hall. Please DO NOT CALL FACILITY. Refer to the numbers on the back of schedule.*

BURBANK	October 13 (Thursday)
Buena Vista Library 300 North Buena Vista Street (Between Verdugo Ave. & Olive Ave.) 91505	10:00 am to 12:00 pm 4:30 pm to 6:30 pm

Note: *Classes will be held in the Meeting Room. Street parking only. Disclaimer: "This program is not sponsored by the Burbank Public Library." Please DO NOT CALL FACILITY. Refer to the numbers on the back of schedule.*

City/Address	Date/Time
--------------	-----------

***Clerks must attend a "Clerks Class" to receive stipend.
If you are late, you will not be admitted.***

LOS ANGELES (Downtown)

October 13 (Thursday)

Hall of Administration

2:00 pm to 4:00 pm

500 West Temple Street

(On S. corner of intersection of N. Grand Ave. & W.
Temple St.)

90012

Note: *Classes will be held in the Board of Supervisors Hearing Room 381-B, on the 3rd Floor. The easiest entrance to parking is at 222 N. Grand Ave. & 500 W. Temple St. Food and beverages are not allowed. There is a cost to park. Please DO NOT CALL FACILITY. Refer to the numbers on the back of schedule.*

POMONA

October 13 (Thursday)

Pilgrim Congregational Church

9:30 am to 11:30 am

600 North Garey Avenue

(Just north of W. Holt Ave. on east side of N. Garey
Ave.)

91767

Note: *Classes will be held in Pilgrim Hall. Park in lot behind church. Enter lot from Pearl St. or Pasadena St. Please DO NOT CALL FACILITY. Refer to the numbers on the back of schedule.*

REDONDO BEACH

October 13 (Thursday)

First United Methodist Church

1:30 pm to 3:30 pm

243 South Broadway

(Between Pacific Coast Hwy. & Catalina Ave.)

90277

Note: *Classes will be held in the Fellowship Hall. Parking available in lot off of Broadway and on street. Please DO NOT CALL FACILITY. Refer to the numbers on the back of schedule.*

City/Address	Date/Time
--------------	-----------

***Clerks must attend a "Clerks Class" to receive stipend.
If you are late, you will not be admitted.***

LA CRESCENTA

October 14 (Friday)

First Baptist Church at La Crescenta
4441 La Crescenta Avenue
(Between Foothill Blvd. & the 210 Frwy.)
91214

1:30 pm to 3:30 pm

Note: Classes will be held in the Fellowship Hall. Please DO NOT CALL FACILITY. Refer to the numbers on the back of schedule.

MONTEBELLO

October 14 (Friday)

American Legion Post #272
616 West Cleveland Avenue
(Between Montebello Blvd. & Poplar Ave.)
90640

1:30 pm to 3:30 pm

Note: Classes will be held in the American Legion Hall. Please DO NOT CALL FACILITY. Refer to the numbers on the back of schedule.

NORTHRIDGE

October 14 (Friday)

United Methodist Church of Northridge
9650 Reseda Boulevard
(Between Lassen St. & Plummer St.)
91324

1:30 pm to 3:30 pm

Note: Classes will be held in the Fellowship Hall. Parking in church lot. Please DO NOT CALL FACILITY. Refer to the numbers on the back of schedule.

City/Address	Date/Time
--------------	-----------

***Clerks must attend a "Clerks Class" to receive stipend.
If you are late, you will not be admitted.***

SHERMAN OAKS

October 14 (Friday)

Sherman Oaks Lutheran Church

1:30 pm to 3:30 pm

14847 Dickens Street

(On NW corner of intersection of Kester Ave. &
Dickens St.)

91403

Note: Classes will be held in the Fellowship Hall. Parking in lot. Street parking available on Dickens St. west of Kester Ave. and on Kester Ave. south of Dickens St. unmetered, but watch for any restrictions. Please DO NOT CALL FACILITY. Refer to the numbers on the back of schedule.

TEMPLE CITY

October 14 (Friday)

Community of Christ Church

1:30 pm to 3:30 pm

9468 Broadway

(Between Temple City Blvd. & Encinita Ave.)

91780

Note: Classes will be held in the Fellowship Hall. Please DO NOT CALL FACILITY. Refer to the numbers on the back of schedule.

ALTADENA

October 15 (Saturday)

Altadena Community Church

1:30 pm to 3:30 pm

943 East Altadena Drive

(Between Lake Ave. & Homepark Ave.)

91001

Note: Classes will be held in Heicher Hall. Parking in the upper lot. Street parking available. Please DO NOT CALL FACILITY. Refer to the numbers on the back of schedule.

City/Address	Date/Time
--------------	-----------

***Clerks must attend a "Clerks Class" to receive stipend.
If you are late, you will not be admitted.***

LAKESWOOD/LONG BEACH

October 15 (Saturday)

Arbor Road Church

1:30 pm to 3:30 pm

5336 East Arbor Road

(On SW corner of intersection of E. Arbor Rd. &
Montair Ave.)

90808

Note: *Classes will be held in the Fellowship Hall downstairs. Elevator available. Please DO NOT CALL FACILITY. Refer to the numbers on the back of schedule.*

LOS ANGELES (Los Feliz)

October 15 (Saturday)

Chevy Chase Recreation Center

1:30 pm to 3:30 pm

4165 Chevy Chase Drive

(Between Alger St. & Brunswick Ave.)

90039

Note: *Classes will be held in the Gymnasium. Please DO NOT CALL FACILITY. Refer to the numbers on the back of schedule.*

MONROVIA

October 15 (Saturday)

First Presbyterian Church

1:30 pm to 3:30 pm

101 East Foothill Boulevard

(On NE corner of intersection of E. Foothill Blvd. &
N. Myrtle Ave.)

91016

Note: *Classes will be held in the Fellowship Hall. Enter parking lot from N. Encinitas Ave. North part of lot is for the school only. South part of lot is for pollworkers. Additional parking lot is available further north on N. Encinitas Ave. above school building. Street parking also available. Please DO NOT CALL FACILITY. Refer to the numbers on the back of schedule.*

City/Address	Date/Time
--------------	-----------

***Clerks must attend a "Clerks Class" to receive stipend.
If you are late, you will not be admitted.***

QUARTZ HILL

October 15 (Saturday)

George Lane Park

1:30 pm to 3:30 pm

5520 West Avenue L-8

(On SW corner of intersection of W. Avenue L-8 &
55th St. W.)

93534

Note: *Classes will be held in the Auditorium. Entrance to parking lot is off of W. Avenue L-8. Street parking available without restriction. Please DO NOT CALL FACILITY. Refer to the numbers on the back of schedule.*

BEVERLY HILLS

October 16 (Sunday)

La Cienega Park Community Center

1:30 pm to 3:30 pm

8400 Gregory Way

(On SE corner of intersection of La Cienega Blvd.
& Gregory Wy.)

90211

Note: *Classes will be held in the Auditorium. Parking in parking structure on SW corner of La Cienega Blvd. and Gregory Way. Turn right into parking structure from southbound La Cienega Blvd., south of Gregory Way. Parking is free on weekends. Please DO NOT CALL FACILITY. Refer to the numbers on the back of schedule.*

NORTH HOLLYWOOD

October 16 (Sunday)

North Hollywood Recreation Center

1:30 pm to 3:30 pm

11430 Chandler Boulevard

(Between Colfax Ave. & Tujunga Ave.)

91601

Note: *Classes will be held in the Senior Center. Please DO NOT CALL FACILITY. Refer to the numbers on the back of schedule.*

City/Address	Date/Time
--------------	-----------

***Clerks must attend a "Clerks Class" to receive stipend.
If you are late, you will not be admitted.***

PACOIMA

October 16 (Sunday)

Valley Crossroads Seventh-Day Adventist Church
11350 Glenoaks Boulevard
(On N. corner of intersection of Filmore St. &
Glenoaks Blvd.)
91331

1:30 pm to 3:30 pm

Note: *Classes will be held in the Fellowship Hall. Please DO NOT CALL FACILITY. Refer to the numbers on the back of schedule.*

PARAMOUNT

October 16 (Sunday)

Progress Park Plaza West
15500 Downey Avenue
(Between Alondra Blvd. & Somerset Blvd.)
90723

1:30 pm to 3:30 pm

Note: *Classes will be held in the Auditorium. It is the building closest to Downey Ave. Please DO NOT CALL FACILITY. Refer to the numbers on the back of schedule.*

WALNUT

October 16 (Sunday)

Walnut Senior Center
21215 La Puente Road
(Between Morningside Dr. & Spur Trail Ave.)
91789

3:00 pm to 5:00 pm

Note: *Classes will be held in the Assembly Room. No smoking allowed in the facility or within 20 feet of the exterior door. Please DO NOT CALL FACILITY. Refer to the numbers on the back of schedule.*

City/Address	Date/Time
--------------	-----------

***Clerks must attend a "Clerks Class" to receive stipend.
If you are late, you will not be admitted.***

ARTESIA

October 17 (Monday)

AJ Padelford Park
11870 169th Street
(Between Clarkdale Ave. & Elaine Ave.)
90701

1:30 pm to 3:30 pm HINDI INTERPRETER

Note: *Classes will be held in the All Purpose Room. Please DO NOT CALL FACILITY. Refer to the numbers on the back of schedule.*

BALDWIN PARK

October 17 (Monday)

Church of the Redeemer
3739 North Monterey Avenue
(Between Ramona Blvd. & Frazier St.)
91706

1:30 pm to 3:30 pm

Note: *Classes will be held in the Fellowship Hall. No smoking in or around the venue. Please DO NOT CALL FACILITY. Refer to the numbers on the back of schedule.*

CITY OF INDUSTRY

October 17 (Monday)

Veterans of Foreign Wars Post #1944
16157 Gale Avenue
(Between Stimson Ave. & Azusa Ave.)
91745

1:30 pm to 3:30 pm

Note: *Classes will be held in the Main Hall. Please DO NOT CALL FACILITY. Refer to the numbers on the back of schedule.*

***Clerks must attend a "Clerks Class" to receive stipend.
If you are late, you will not be admitted.***

SANTA CLARITA**October 17 (Monday)**

Activity Center
20880 Centre Pointe Parkway
(Turn east off of Golden Valley Rd., just south of
Soledad Canyon Rd.)
91350

1:00 pm to 3:00 pm

Note: *Classes will be held in the Santa Clarita Room. Follow signs to parking lot at top of hill. Enter room through door off of parking lot, not through main front doors. Please DO NOT CALL FACILITY. Refer to the numbers on the back of schedule.*

ARCADIA**October 18 (Tuesday)**

Arcadia Public Library
20 West Duarte Road
(On SW corner of intersection of S. Santa Anita
Ave. & E. Duarte Rd.)
91006

1:30 pm to 3:30 pm

Note: *Classes will be held in the Cay Mortenson Auditorium. Four hour parking available in the West Parking Lot. Please follow parking restrictions. Disclaimer: "This program is not sponsored by the Arcadia Public Library." Please DO NOT CALL FACILITY. Refer to the numbers on the back of schedule.*

CARSON**October 18 (Tuesday)**

Congresswoman Juanita Millender-McDonald
Community Center
801 East Carson Street
(Between Avalon Blvd. & 405 Fwy.)
90745

1:30 pm to 3:30 pm

TAGALOG/FILIPINO INTERPRETER

Note: *Classes will be held in Hall C. Please DO NOT CALL FACILITY. Refer to the numbers on the back of schedule.*

***Clerks must attend a "Clerks Class" to receive stipend.
If you are late, you will not be admitted.***

HAWTHORNE**October 18 (Tuesday)**

Hawthorne Memorial Center
3901 West El Segundo Boulevard
(Between Prairie Ave. & Cordary Ave.)
90250

1:30 pm to 3:30 pm

Note: *Classes will be held in the Venus Room. No Smoking. Please DO NOT CALL FACILITY.
Refer to the numbers on the back of schedule.*

INGLEWOOD**October 18 (Tuesday)**

Darby Park
3400 Arbor Vitae Street
(West of Crenshaw Blvd. to end of Arbor Vitae St.)
90305

3:00 pm to 5:00 pm

Note: *Classes will be held in the Gymnasium. Please, no heels on gym floor. Additional parking
available on West 90th St. Please DO NOT CALL FACILITY. Refer to the numbers on the
back of schedule.*

WEST HOLLYWOOD**October 18 (Tuesday)**

Plummer Park
7377 Santa Monica Boulevard
(Between La Brea Ave. & Fairfax Ave.)
90046

1:30 pm to 3:30 pm

Note: *Classes will be held in Rooms 1 & 2. There are two parking lots; south lot is off of Santa
Monica Blvd., and north lot is off of Fountain Ave. Please DO NOT CALL FACILITY. Refer
to the numbers on the back of schedule.*

City/Address	Date/Time
--------------	-----------

***Clerks must attend a "Clerks Class" to receive stipend.
If you are late, you will not be admitted.***

LOS ANGELES (East)	October 19 (Wednesday)
---------------------------	-------------------------------

Belvedere Park

1:30 pm to 3:30 pm

4914 East Cesar Chavez Avenue

(Between Mednik Ave. & Vancouver Ave.)

90022

Note: Classes will be held in the Community Room. Three parking lots are available with no time limit. The closest parking lot is entered from Mednik Ave., other lots can also be entered from E. Cesar Chavez Ave. and E. 1st St. Please DO NOT CALL FACILITY. Refer to the numbers on the back of schedule.

LYNWOOD	October 19 (Wednesday)
----------------	-------------------------------

Bateman Hall

1:00 pm to 3:00 pm

11331 Ernestine Avenue

(On NW corner of intersection of Harriet Tubman
Wy. & Ernestine Ave.)

90262

Note: Classes will be held in Room 2. Please DO NOT CALL FACILITY. Refer to the numbers on the back of schedule.

PALMDALE	October 19 (Wednesday)
-----------------	-------------------------------

Chimbole Cultural Center

2:30 pm to 4:30 pm

38350 Sierra Highway

(Between E. Palmdale Blvd. & E. Avenue Q-11)

93550

Note: Classes will be held in the Manzanita Ballroom. Parking lot is behind facility. Enter lot from E. Palmdale Blvd. Please DO NOT CALL FACILITY. Refer to the numbers on the back of schedule.

City/Address	Date/Time
--------------	-----------

***Clerks must attend a "Clerks Class" to receive stipend.
If you are late, you will not be admitted.***

PALOS VERDES PENINSULA

October 19 (Wednesday)

South Coast Botanic Garden

1:30 pm to 3:30 pm

26300 Crenshaw Boulevard

(Between Palos Verdes Dr. North & Rolling Hills Rd.)

90274

Note: Classes will be held in the Francis Young Hall. Smoking is not permitted ANYWHERE on the property, inside or outside, including parking lots. Access to Pollworker classes DOES NOT include access to gardens, except by separate ticket purchased from the Garden Ticket Booth. Please DO NOT CALL FACILITY. Refer to the numbers on the back of schedule.

SANTA MONICA

October 19 (Wednesday)

Santa Monica Bay Woman's Club

1:30 pm to 3:30 pm

1210 4th Street

(Between Wilshire Blvd. & Arizona Ave.)

90401

Note: Classes will be held in the Theater. Parking in structure next to Woman's Club. Enter from 4th St. First two hours free, cost will be incurred thereafter. Please DO NOT CALL FACILITY. Refer to the numbers on the back of schedule.

AZUSA

October 20 (Thursday)

Memorial Park Recreation Center

1:00 pm to 3:00 pm

320 North Orange Avenue

6:30 pm to 8:30 pm

(Between W. 4th St. & W. 3rd St.)

91702

Note: Classes will be held in Rooms 4 & 5. Need to enter parking lot from W. 4th St. or W. 3rd St., as there is no entrance off of N. Orange Ave. Additional parking E. of facility on W. 4th St. Street parking available without restriction. Please DO NOT CALL FACILITY. Refer to the numbers on the back of schedule.

City/Address	Date/Time
--------------	-----------

***Clerks must attend a "Clerks Class" to receive stipend.
If you are late, you will not be admitted.***

REDONDO BEACH

October 20 (Thursday)

First United Methodist Church
243 South Broadway
(Between Pacific Coast Hwy. & Catalina Ave.)
90277

1:00 pm to 3:00 pm
6:30 pm to 8:30 pm

Note: Classes will be held in the Fellowship Hall. Parking available in lot off of Broadway and on street. Please DO NOT CALL FACILITY. Refer to the numbers on the back of schedule.

SAN FERNANDO

October 20 (Thursday)

San Fernando Regional Pool Facility
208 Park Avenue
(Between 1st St. & 4th St.)
91340

1:00 pm to 3:00 pm

Note: Classes will be held in the Multipurpose Room on 2nd floor; elevator is available. Street parking is available. Overflow parking is available in a vacant lot on the corner of Park Ave. and 4th St. Enter lot from 4th St. then walk down Park Ave. to facility. Please DO NOT CALL FACILITY. Refer to the numbers on the back of schedule.

SAN PEDRO

October 20 (Thursday)

Peck Park Community Center
560 North Western Avenue
(Between W. Summerland Ave. & W. Crestwood Ave.)
90732

1:00 pm to 3:00 pm
6:30 pm to 8:30 pm

Note: Classes will be held in the Auditorium. Please DO NOT CALL FACILITY. Refer to the numbers on the back of schedule.

City/Address	Date/Time
--------------	-----------

***Clerks must attend a "Clerks Class" to receive stipend.
If you are late, you will not be admitted.***

WEST HILLS	October 20 (Thursday)
First United Methodist Church of Canoga Park 22700 Sherman Way (Between Fallbrook Ave. & Shoup Ave.) 91307	1:00 pm to 3:00 pm 6:30 pm to 8:30 pm

Note: Classes will be held in the Fellowship Hall. Please DO NOT CALL FACILITY. Refer to the numbers on the back of schedule.

HERMOSA BEACH	October 21 (Friday)
Kiwanis Club of Hermosa Beach 2515 Valley Drive (Between Gould Ave. & 25th St.) 90254	1:00 pm to 3:00 pm 6:30 pm to 8:30 pm

Note: Classes will be held in the Banquet Hall. Parking in small lot or on street. Please DO NOT CALL FACILITY. Refer to the numbers on the back of schedule.

LA CAÑADA-FLINTRIDGE	October 21 (Friday)
La Cañada Presbyterian Church 626 Foothill Boulevard (Between Oakwood Ave. & Woodleigh Ln.) 91011	1:00 pm to 3:00 pm 6:30 pm to 8:30 pm

Note: Classes will be held in the Fellowship Hall. Please DO NOT CALL FACILITY. Refer to the numbers on the back of schedule.

LOS ANGELES (South)	October 21 (Friday)
Bethel A.M.E. Church 7900 South Western Avenue (Between W. 79th St. & W. 80th St.) 90047	1:30 pm to 3:30 pm

Note: Classes will be held in the Social Hall. Parking lot available. Please DO NOT CALL FACILITY. Refer to the numbers on the back of schedule.

City/Address	Date/Time
--------------	-----------

***Clerks must attend a "Clerks Class" to receive stipend.
If you are late, you will not be admitted.***

TEMPLE CITY	October 21 (Friday)
Community of Christ Church	1:00 pm to 3:00 pm
9468 Broadway	6:30 pm to 8:30 pm
(Between Temple City Blvd. & Encinita Ave.)	
91780	

Note: Classes will be held in the Fellowship Hall. Please DO NOT CALL FACILITY. Refer to the numbers on the back of schedule.

TORRANCE	October 21 (Friday)
Torrance Cultural Arts Center	1:30 pm to 3:30 pm
3330 Civic Center Drive	
(Between Madrona Ave. & Maple Ave.)	
90503	

Note: Classes will be held in the Toyota Meeting Room. Please DO NOT CALL FACILITY. Refer to the numbers on the back of schedule.

ALTADENA	October 22 (Saturday)
Altadena Community Church	10:00 am to 12:00 pm
943 East Altadena Drive	4:00 pm to 6:00 pm
(Between Lake Ave. & Homepark Ave.)	
91001	

Note: Classes will be held in Heicher Hall. Parking in the upper lot. Street parking available. Please DO NOT CALL FACILITY. Refer to the numbers on the back of schedule.

LONG BEACH (North)	October 22 (Saturday)
Veterans Park	2:30 pm to 4:30 pm
101 East 28th Street	
(East of Pacific Ave.)	
90806	

Note: Classes will be held in the Social Hall. Parking in lot. Please DO NOT CALL FACILITY. Refer to the numbers on the back of schedule.

***Clerks must attend a "Clerks Class" to receive stipend.
If you are late, you will not be admitted.***

QUARTZ HILL**October 22 (Saturday)**

George Lane Park

1:30 pm to 3:30 pm

5520 West Avenue L-8

(On SW corner of intersection of W. Avenue L-8 &
55th St. W.)

93534

Note: Classes will be held in the Auditorium. Entrance to parking lot is off of W. Avenue L-8. Street parking available without restriction. Please DO NOT CALL FACILITY. Refer to the numbers on the back of schedule.

SUNLAND**October 22 (Saturday)**

New Hope Community Church of Sunland

1:30 pm to 3:30 pm

10438 Oro Vista Avenue

(Between Foothill Blvd. & Wyngate St.)

91040

Note: Classes will be held in Lane Hall. Follow signs to Lane Hall. Please DO NOT CALL FACILITY. Refer to the numbers on the back of schedule.

WEST COVINA**October 22 (Saturday)**

West Covina Senior Citizens Center

1:30 pm to 3:30 pm

2501 East Cortez Street

(Between Citrus St. & Hollenbeck St.)

91791

Note: Classes will be held in the Main Hall. Please DO NOT CALL FACILITY. Refer to the numbers on the back of schedule.

City/Address	Date/Time
--------------	-----------

***Clerks must attend a "Clerks Class" to receive stipend.
If you are late, you will not be admitted.***

COMPTON

October 23 (Sunday)

Dollarhide Community Center

1:30 pm to 3:30 pm

301 North Tamarind Avenue

(On NW corner of intersection of N. Tamarind Ave.
& E. Palmer St.)

90220

Note: *Classes will be held in the Banquet Room. Parking in parking structure, enter from N. Tamarind Ave. on either side of building. Some street parking available. No food or drink, other than water allowed. Please DO NOT CALL FACILITY. Refer to the numbers on the back of schedule.*

LOS ANGELES (Lincoln Heights)

October 23 (Sunday)

Plaza de la Raza

1:30 pm to 3:30 pm

3540 North Mission Road

(Near the intersection of N. Mission Rd. & Lincoln
Park Ave.)

90031

Note: *Classes will be held in the Music Building. Limited parking in parking lot off of N. Mission Rd. Unlimited street parking on N. Mission Rd. Please DO NOT CALL FACILITY. Refer to the numbers on the back of schedule.*

NORWALK

October 23 (Sunday)

Norwalk Arts and Sports Complex

3:00 pm to 5:00 pm

13200 Clarkdale Avenue

(Between Sproul St. & Olive St.)

90650

Note: *Classes will be held in the Rich Rehearsal Hall Multipurpose Room. Parking available across from the facility at the corner of Clarkdale Ave. & Sproul St. Please DO NOT CALL FACILITY. Refer to the numbers on the back of schedule.*

City/Address	Date/Time
--------------	-----------

***Clerks must attend a "Clerks Class" to receive stipend.
If you are late, you will not be admitted.***

PANORAMA CITY

October 23 (Sunday)

Panorama City Recreation Center

3:00 pm to 5:00 pm

8600 Hazeltine Avenue

(Between Roscoe Blvd. & Parthenia St.)

91402

Note: *Classes will be held in the Gymnasium. Please DO NOT CALL FACILITY. Refer to the numbers on the back of schedule.*

WALNUT

October 23 (Sunday)

Walnut Senior Center

1:30 pm to 3:30 pm

21215 La Puente Road

(Between Morningside Dr. & Spur Trail Ave.)

91789

Note: *Classes will be held in the Assembly Room. No smoking allowed in the facility or within 20 feet of the exterior door. Please DO NOT CALL FACILITY. Refer to the numbers on the back of schedule.*

BURBANK

October 24 (Monday)

Buena Vista Library

1:00 pm to 3:00 pm

300 North Buena Vista Street

6:30 pm to 8:30 pm

(Between Verdugo Ave. & Olive Ave.)

91505

Note: *Classes will be held in the Meeting Room. Street parking only. Disclaimer: "This program is not sponsored by the Burbank Public Library." Please DO NOT CALL FACILITY. Refer to the numbers on the back of schedule.*

City/Address	Date/Time
--------------	-----------

***Clerks must attend a "Clerks Class" to receive stipend.
If you are late, you will not be admitted.***

LA MIRADA

October 24 (Monday)

La Mirada Resource Center

1:00 pm to 3:00 pm

13810 La Mirada Boulevard

6:30 pm to 8:30 pm

(Between Foster Rd. & Whiterock Dr.)

90638

Note: Classes will be held in the Resource Center, Rooms 1 & 2. Please DO NOT CALL FACILITY. Refer to the numbers on the back of schedule.

LOS ANGELES (Mid-Wilshire)

October 24 (Monday)

Wilshire United Methodist Church

2:30 pm to 4:30 pm KOREAN INTERPRETER

4350 Wilshire Boulevard

(Between S. Plymouth Blvd. & S. Lucerne Blvd.)

90010

Note: Classes will be held in the Sanctuary. Parking lot is off Wilshire Blvd. Please DO NOT CALL FACILITY. Refer to the numbers on the back of schedule.

MONTEBELLO

October 24 (Monday)

American Legion Post #272

3:00 pm to 5:00 pm

616 West Cleveland Avenue

(Between Montebello Blvd. & Poplar Ave.)

90640

Note: Classes will be held in the American Legion Hall. Please DO NOT CALL FACILITY. Refer to the numbers on the back of schedule.

ROSEMEAD

October 24 (Monday)

Evergreen Baptist Church of Los Angeles

1:00 pm to 3:00 pm

1255 San Gabriel Boulevard

6:30 pm to 8:30 pm

(Between Paramount Blvd. & Rose Glen Ave.)

91770

Note: Classes will be held in the Ministry Center Fellowship Hall. Please DO NOT CALL FACILITY. Refer to the numbers on the back of schedule.

City/Address	Date/Time
--------------	-----------

***Clerks must attend a "Clerks Class" to receive stipend.
If you are late, you will not be admitted.***

BELLFLOWER

October 25 (Tuesday)

Bethany Christian Reformed Church

1:00 pm to 3:00 pm

17054 Bixby Avenue

6:30 pm to 8:30 pm

(On NE corner of intersection of Park St. & Bixby Ave.)

90706

Note: Classes will be held in the Friendship Center (North Side). Please DO NOT CALL FACILITY. Refer to the numbers on the back of schedule.

CHATSWORTH

October 25 (Tuesday)

Chatsworth Foursquare Church

1:00 pm to 3:00 pm

10210 Canoga Avenue

6:30 pm to 8:30 pm

(Between Devonshire St. & Lemarsh St.)

91311

Note: Classes will be held in Burns Hall. Enter parking lot from Lemarsh St. Please DO NOT CALL FACILITY. Refer to the numbers on the back of schedule.

CLAREMONT

October 25 (Tuesday)

Granite Creek Community Church

2:30 pm to 4:30 pm

1580 North Claremont Boulevard

(On the SE corner of N. Claremont Blvd. & the north end of Andrew Dr.)

91711

Note: Classes will be held in the Sanctuary. Enter parking lot from Andrew Dr. Please DO NOT CALL FACILITY. Refer to the numbers on the back of schedule.

City/Address	Date/Time
--------------	-----------

***Clerks must attend a "Clerks Class" to receive stipend.
If you are late, you will not be admitted.***

WINNETKA/WOODLAND HILLS	October 25 (Tuesday)
Disabled American Veterans Post #73	1:00 pm to 3:00 pm
6543 Corbin Avenue	6:30 pm to 8:30 pm
(Between Vanowen St. & Victory Blvd.)	
91367	

Note: Classes will be held in the Meeting Hall. Please DO NOT CALL FACILITY. Refer to the numbers on the back of schedule.

GLENDORA	October 26 (Wednesday)
Glendora Public Library	1:30 pm to 3:30 pm
140 South Glendora Avenue	
(Between Carroll Ave. & E. Foothill Blvd.)	
91741	

Note: Classes will be held in the Bidwell Forum Room on 2nd Floor. Please DO NOT CALL FACILITY. Refer to the numbers on the back of schedule.

HUNTINGTON PARK	October 26 (Wednesday)
Huntington Park Recreation Center	1:00 pm to 3:00 pm
3401 East Florence Avenue	6:30 pm to 8:30 pm
(Between State St. & California Ave.)	
90255	

Note: Classes will be held in the Social Hall. Please DO NOT CALL FACILITY. Refer to the numbers on the back of schedule.

City/Address	Date/Time
--------------	-----------

***Clerks must attend a "Clerks Class" to receive stipend.
If you are late, you will not be admitted.***

LOS ANGELES (Downtown)

October 26 (Wednesday)

Hall of Administration

2:00 pm to 4:00 pm

500 West Temple Street

(On S. corner of intersection of N. Grand Ave. & W.
Temple St.)

90012

Note: Classes will be held in the Board of Supervisors Hearing Room 381-B, on the 3rd Floor. The easiest entrance to parking is at 222 N. Grand Ave. & 500 W. Temple St. Food and beverages are not allowed. There is a cost to park. Please DO NOT CALL FACILITY. Refer to the numbers on the back of schedule.

SANTA CLARITA

October 26 (Wednesday)

Activity Center

11:00 am to 1:00 pm

20880 Centre Pointe Parkway

(Turn east off of Golden Valley Rd., just south of
Soledad Canyon Rd.)

91350

Note: Classes will be held in the Santa Clarita Room. Follow signs to parking lot at top of hill. Enter room through door off of parking lot, not through main front doors. Please DO NOT CALL FACILITY. Refer to the numbers on the back of schedule.

SOUTH PASADENA

October 26 (Wednesday)

South Pasadena Library

1:00 pm to 3:00 pm

1115 El Centro Street

6:30 pm to 8:30 pm

(Between Fremont Ave. & Diamond Ave.)

91030

Note: Classes will be held in the Community Room. It is on the north side of library building. Wheelchair access on left side of stairs. Please be quiet in the mezzanine area and hallway between restrooms. Disclaimer: "This activity is not sponsored by the City of South Pasadena or the South Pasadena Public Library." Parking without time restriction available in lot behind South Pasadena Unified School District building across the street to the north. Enter lot at 925 Fairview Ave. and park in the back side closest to Mission St. Lot is locked at 9:00 PM. Please DO NOT CALL FACILITY. Refer to the numbers on the back of schedule.

City/Address	Date/Time
--------------	-----------

***Clerks must attend a "Clerks Class" to receive stipend.
If you are late, you will not be admitted.***

COVINA

October 27 (Thursday)

Covina United Methodist Church
437 West San Bernardino Road
(Between N. Hollenbeck Ave. & N. 5th St.)
91723

1:00 pm to 3:00 pm
6:30 pm to 8:30 pm

Note: Classes will be held in Dougherty Hall. Please DO NOT CALL FACILITY. Refer to the numbers on the back of schedule.

LONG BEACH

October 27 (Thursday)

Our Saviour's Lutheran Church
370 Junipero Avenue
(On NE corner of Junipero Ave. & Carroll Park N.)
90814

1:30 pm to 3:30 pm

Note: Classes will be held in the Bjerke Fellowship Hall. Enter Fellowship Hall from Carroll Park N. Parking in church lot, enter from Carroll Park N. Street parking available. Please DO NOT CALL FACILITY. Refer to the numbers on the back of schedule.

LOS ANGELES (South)

October 27 (Thursday)

Bethel A.M.E. Church
7900 South Western Avenue
(Between W. 79th St. & W. 80th St.)
90047

1:30 pm to 3:30 pm

Note: Classes will be held in the Social Hall. Parking lot available. Please DO NOT CALL FACILITY. Refer to the numbers on the back of schedule.

City/Address	Date/Time
--------------	-----------

***Clerks must attend a "Clerks Class" to receive stipend.
If you are late, you will not be admitted.***

SAN DIMAS

October 27 (Thursday)

Foothill Vineyard Church
100 East Foothill Boulevard
(Between N. San Dimas Ave. & N. Walnut Ave.)
91773

1:00 pm to 3:00 pm

6:30 pm to 8:30 pm

Note: Classes will be held in the Sanctuary. Parking available in lot off of E. Foothill Blvd. or N. San Dimas Ave. Please DO NOT CALL FACILITY. Refer to the numbers on the back of schedule.

SANTA MONICA

October 27 (Thursday)

Santa Monica Bay Woman's Club
1210 4th Street
(Between Wilshire Blvd. & Arizona Ave.)
90401

1:00 pm to 3:00 pm

6:30 pm to 8:30 pm

Note: Classes will be held in the Theater. Parking in structure next to Woman's Club. Enter from 4th St. First two hours free, cost will be incurred thereafter. Please DO NOT CALL FACILITY. Refer to the numbers on the back of schedule.

LONG BEACH (North)

October 28 (Friday)

Gethsemane Baptist Church
6095 Orange Avenue
(Between E. 60th St. & E. 61st St.)
90805

1:00 pm to 3:00 pm

6:30 pm to 8:30 pm

Note: Classes will be held in the Fellowship Hall. Three parking lots available. One is south of church, enter from E. 60th St. Other lots on east side of Orange Ave. on either side of E. 60th St., enter both lots from Orange Ave. Please DO NOT CALL FACILITY. Refer to the numbers on the back of schedule.

City/Address	Date/Time
--------------	-----------

***Clerks must attend a "Clerks Class" to receive stipend.
If you are late, you will not be admitted.***

MISSION HILLS

October 28 (Friday)

Laborers' Union Local 300
14800 Devonshire Street
(On SW corner of intersection of Devonshire St. &
Woodman Ave.)
91345

1:00 pm to 3:00 pm
6:30 pm to 8:30 pm

Note: Classes will be held in the Assembly Room. Parking around building and in gated lot behind facility, enter lot from alley off of Woodman Ave. Please DO NOT CALL FACILITY. Refer to the numbers on the back of schedule.

NORTHRIDGE

October 28 (Friday)

United Methodist Church of Northridge
9650 Reseda Boulevard
(Between Lassen St. & Plummer St.)
91324

1:00 pm to 3:00 pm
6:30 pm to 8:30 pm

Note: Classes will be held in the Fellowship Hall. Parking in church lot. Please DO NOT CALL FACILITY. Refer to the numbers on the back of schedule.

VAN NUYS

October 28 (Friday)

Van Nuys Park Recreation Center
14301 Vanowen Street
(Between Van Nuys Blvd. & Hazeltine Ave.)
91405

1:00 pm to 3:00 pm
6:30 pm to 8:30 pm

Note: Classes will be held in the Gymnasium. Parking lot entrance is on Tyrone Ave. Additional parking on Tyrone Ave. and Lennox Ave. Please DO NOT CALL FACILITY. Refer to the numbers on the back of schedule.

City/Address	Date/Time
--------------	-----------

***Clerks must attend a "Clerks Class" to receive stipend.
If you are late, you will not be admitted.***

WHITTIER	October 28 (Friday)
East Whittier United Methodist Church	1:00 pm to 3:00 pm
10005 South Cole Road	6:30 pm to 8:30 pm
(Between Lambert Rd. & Whittier Blvd.)	
90603	

Note: Classes will be held in the Fellowship Hall. Please DO NOT CALL FACILITY. Refer to the numbers on the back of schedule.

CULVER CITY	October 29 (Saturday)
Culver City Veterans Memorial Building	1:30 pm to 3:30 pm
4117 Overland Avenue	
(On south corner of Culver Blvd. & Overland Ave.)	
90230	

Note: Classes will be held in the Auditorium. Enter parking lot off of Culver Blvd. Please DO NOT CALL FACILITY. Refer to the numbers on the back of schedule.

GARDENA	October 29 (Saturday)
Nakaoka Community Center	1:30 pm to 3:30 pm
1670 West 162nd Street	
(Between S. Western Ave. & Denker Ave.)	
90247	

Note: Classes will be held in the Auditorium. Small parking lot in front of building. Two additional lots across the street with one entrance off 162nd St. and the other off La Salle Ave. Parking lot off Gardena Blvd. at City Hall also. Please DO NOT CALL FACILITY. Refer to the numbers on the back of schedule.

City/Address	Date/Time
--------------	-----------

***Clerks must attend a "Clerks Class" to receive stipend.
If you are late, you will not be admitted.***

LAKESWOOD/LONG BEACH

October 29 (Saturday)

Arbor Road Church

10:00 am to 12:00 pm

5336 East Arbor Road

4:00 pm to 6:00 pm

(On SW corner of intersection of E. Arbor Rd. &
Montair Ave.)

90808

Note: Classes will be held in the Fellowship Hall downstairs. Elevator available. Please DO NOT CALL FACILITY. Refer to the numbers on the back of schedule.

PARAMOUNT

October 29 (Saturday)

Progress Park Plaza West

1:30 pm to 3:30 pm

15500 Downey Avenue

(Between Alondra Blvd. & Somerset Blvd.)

90723

Note: Classes will be held in the Auditorium. It is the building closest to Downey Ave. Please DO NOT CALL FACILITY. Refer to the numbers on the back of schedule.

PASADENA

October 29 (Saturday)

Westminster Presbyterian Church

1:00 pm to 3:00 pm

1757 North Lake Avenue

(Between E. Woodbury Rd. & Washington Blvd.)

91104

Note: Classes will be held in Morrison Hall. Parking in lot behind church. Enter lot from Fiske Ave. or Atchison St. Please DO NOT CALL FACILITY. Refer to the numbers on the back of schedule.

City/Address	Date/Time
--------------	-----------

***Clerks must attend a "Clerks Class" to receive stipend.
If you are late, you will not be admitted.***

ALHAMBRA

October 30 (Sunday)

Joslyn Adult Center
210 North Chapel Avenue
(Between E. Alhambra Rd. & E. Main St.)
91801

1:30 pm to 3:30 pm

Note: Classes will be held in the Alhambra Room. Please DO NOT CALL FACILITY. Refer to the numbers on the back of schedule.

BEVERLY HILLS

October 30 (Sunday)

La Cienega Park Community Center
8400 Gregory Way
(On SE corner of intersection of La Cienega Blvd.
& Gregory Wy.)
90211

1:30 pm to 3:30 pm

Note: Classes will be held in the Auditorium. Parking in parking structure on SW corner of La Cienega Blvd. and Gregory Way. Turn right into parking structure from southbound La Cienega Blvd., south of Gregory Way. Parking is free on weekends. Please DO NOT CALL FACILITY. Refer to the numbers on the back of schedule.

MALIBU

October 30 (Sunday)

Michael Landon Community Center
24250 Pacific Coast Highway
(At the south end of Malibu Canyon Rd., south side
of Pacific Coast Hwy.)
90265

1:30 pm to 3:30 pm

Note: Classes will be held in the Michael Landon Community Center at Malibu Bluff Park. Please DO NOT CALL FACILITY. Refer to the numbers on the back of schedule.

City/Address	Date/Time
--------------	-----------

***Clerks must attend a "Clerks Class" to receive stipend.
If you are late, you will not be admitted.***

NORTH HOLLYWOOD

October 30 (Sunday)

North Hollywood Recreation Center
11430 Chandler Boulevard
(Between Colfax Ave. & Tujunga Ave.)
91601

1:30 pm to 3:30 pm THAI INTERPRETER

Note: *Classes will be held in the Senior Center. Please DO NOT CALL FACILITY. Refer to the numbers on the back of schedule.*

PACOIMA

October 30 (Sunday)

Valley Crossroads Seventh-Day Adventist Church
11350 Glenoaks Boulevard
(On N. corner of intersection of Filmore St. & Glenoaks Blvd.)
91331

1:30 pm to 3:30 pm

Note: *Classes will be held in the Fellowship Hall. Please DO NOT CALL FACILITY. Refer to the numbers on the back of schedule.*

CARSON

October 31 (Monday)

Congresswoman Juanita Millender-McDonald
Community Center
801 East Carson Street
(Between Avalon Blvd. & 405 Fwy.)
90745

1:30 pm to 3:30 pm

Note: *Classes will be held in Hall C. Please DO NOT CALL FACILITY. Refer to the numbers on the back of schedule.*

City/Address	Date/Time
--------------	-----------

***Clerks must attend a "Clerks Class" to receive stipend.
If you are late, you will not be admitted.***

DOWNEY

October 31 (Monday)

Woman's Club of Downey
9813 Paramount Boulevard
(Between Florence Ave. & Suva St.)
90240

1:00 pm to 3:00 pm
6:30 pm to 8:30 pm

Note: Classes will be held in the Auditorium. Entrance to parking lot is off of Lubec St. Please DO NOT CALL FACILITY. Refer to the numbers on the back of schedule.

LOS ANGELES (West)

October 31 (Monday)

Skirball Cultural Center
2701 North Sepulveda Boulevard
(On Sepulveda Blvd., just N. of Skirball Center Dr.)
90049

1:00 pm to 3:00 pm
6:30 pm to 8:30 pm

Note: Classes will be held in the Haas Conference Center 171-172. Parking available in the underground parking lot, entrance is at Herscher Way on W. side of Sepulveda Blvd. Additional parking on E. side of Sepulveda Blvd. at Bergreen Pl. Please DO NOT CALL FACILITY. Refer to the numbers on the back of schedule.

TORRANCE

October 31 (Monday)

Torrance Cultural Arts Center
3330 Civic Center Drive
(Between Madrona Ave. & Maple Ave.)
90503

2:30 pm to 4:30 pm JAPANESE INTERPRETER

Note: Classes will be held in the Toyota Meeting Room. Please DO NOT CALL FACILITY. Refer to the numbers on the back of schedule.

City/Address	Date/Time
--------------	-----------

***Clerks must attend a "Clerks Class" to receive stipend.
If you are late, you will not be admitted.***

CERRITOS

November 1 (Tuesday)

First Evangelical Church of Cerritos
11330 166th Street
(Between Studebaker Rd. & Gridley Rd.)
90703

1:00 pm to 3:00 pm
6:30 pm to 8:30 pm

Note: Classes will be held in the Gymnasium. Please DO NOT CALL FACILITY. Refer to the numbers on the back of schedule.

GLENDALE

November 1 (Tuesday)

First Congregational Church of Glendale
2001 Cañada Boulevard
(On SW corner of Cañada Bl. & Wabasso Wy.)
91208

1:00 pm to 3:00 pm
6:30 pm to 8:30 pm

Note: Classes will be held in the Fellowship Hall. Please DO NOT CALL FACILITY. Refer to the numbers on the back of schedule.

INGLEWOOD

November 1 (Tuesday)

Darby Park
3400 Arbor Vitae Street
(West of Crenshaw Blvd. to end of Arbor Vitae St.)
90305

1:00 pm to 3:00 pm
6:30 pm to 8:30 pm

Note: Classes will be held in the Gymnasium. Please, no heels on gym floor. Additional parking available on West 90th St. Please DO NOT CALL FACILITY. Refer to the numbers on the back of schedule.

City/Address	Date/Time
--------------	-----------

***Clerks must attend a "Clerks Class" to receive stipend.
If you are late, you will not be admitted.***

LOS ANGELES (Hollywood Hills)

November 1 (Tuesday)

Forest Lawn – Hall of Liberty
6300 Forest Lawn Drive
(Between 134 Fwy. & Barham Blvd.)
90068

1:30 pm to 3:30 pm

Note: *Classes will be held in the Hall of Liberty Auditorium. Follow "Hall of Liberty" posted signs. Please DO NOT CALL FACILITY. Refer to the numbers on the back of schedule.*

PALOS VERDES PENINSULA

November 1 (Tuesday)

South Coast Botanic Garden
26300 Crenshaw Boulevard
(Between Palos Verdes Dr. North & Rolling Hills Rd.)
90274

1:00 pm to 3:00 pm

6:30 pm to 8:30 pm

Note: *Classes will be held in the Francis Young Hall. Smoking is not permitted ANYWHERE on the property, inside or outside, including parking lots. Access to Pollworker classes DOES NOT include access to gardens, except by separate ticket purchased from the Garden Ticket Booth. Please DO NOT CALL FACILITY. Refer to the numbers on the back of schedule.*

DIAMOND BAR

November 2 (Wednesday)

South Coast Air Quality Management District
21865 East Copley Drive
(Between Golden Springs Dr. & S. Valley Vista Dr.)
91765

1:00 pm to 3:00 pm

6:30 pm to 8:30 pm

Note: *Classes will be held in the Auditorium. Please DO NOT CALL FACILITY. Refer to the numbers on the back of schedule.*

City/Address	Date/Time
--------------	-----------

***Clerks must attend a "Clerks Class" to receive stipend.
If you are late, you will not be admitted.***

LONG BEACH	November 2 (Wednesday)
Greek Orthodox Church	1:00 pm to 3:00 pm
5761 East Colorado Street	6:30 pm to 8:30 pm
(Just east of intersection of Bellflower Blvd. & Colorado St.)	
90814	

Note: Classes will be held in the Betty Reckas Cultural Center. No smoking permitted within 30 feet of main front door to Betty Ruckas Cultural Center, or within 15 feet of any other door. Please DO NOT CALL FACILITY. Refer to the numbers on the back of schedule.

LOS ANGELES (West Adams)	November 2 (Wednesday)
Holman United Methodist Church	1:00 pm to 3:00 pm
3320 West Adams Boulevard	6:30 pm to 8:30 pm
(Between 3rd Ave. & 4th Ave.)	
90018	

Note: Classes will be held in the L.L. White Hall. DO NOT PARK IN THE FRONT LOT. Park only in the Education Lot or Lot B in the rear. Please DO NOT CALL FACILITY. Refer to the numbers on the back of schedule.

PALMDALE	November 2 (Wednesday)
Chimbole Cultural Center	1:00 pm to 3:00 pm
38350 Sierra Highway	
(Between E. Palmdale Blvd. & E. Avenue Q-11)	
93550	

Note: Classes will be held in the Manzanita Ballroom. Parking lot is behind facility. Enter lot from E. Palmdale Blvd. Please DO NOT CALL FACILITY. Refer to the numbers on the back of schedule.

City/Address	Date/Time
--------------	-----------

***Clerks must attend a "Clerks Class" to receive stipend.
If you are late, you will not be admitted.***

SANTA CLARITA

November 2 (Wednesday)

Activity Center
20880 Centre Pointe Parkway
(Turn east off of Golden Valley Rd., just south of
Soledad Canyon Rd.)
91350

1:30 pm to 3:30 pm

Note: *Classes will be held in the Santa Clarita Room. Follow signs to parking lot at top of hill. Enter room through door off of parking lot, not through main front doors. Please DO NOT CALL FACILITY. Refer to the numbers on the back of schedule.*

LOS ANGELES (South)

November 3 (Thursday)

Bethel A.M.E. Church
7900 South Western Avenue
(Between W. 79th St. & W. 80th St.)
90047

1:00 pm to 3:00 pm

6:30 pm to 8:30 pm

Note: *Classes will be held in the Social Hall. Parking lot available. Please DO NOT CALL FACILITY. Refer to the numbers on the back of schedule.*

POMONA

November 3 (Thursday)

Pilgrim Congregational Church
600 North Garey Avenue
(Just north of W. Holt Ave. on east side of N. Garey
Ave.)
91767

2:30 pm to 4:30 pm

Note: *Classes will be held in Pilgrim Hall. Park in lot behind church. Enter lot from Pearl St. or Pasadena St. Please DO NOT CALL FACILITY. Refer to the numbers on the back of schedule.*

City/Address	Date/Time
--------------	-----------

***Clerks must attend a "Clerks Class" to receive stipend.
If you are late, you will not be admitted.***

REDONDO BEACH

November 3 (Thursday)

First United Methodist Church
243 South Broadway
(Between Pacific Coast Hwy. & Catalina Ave.)
90277

3:30 pm to 5:30 pm

Note: Classes will be held in the Fellowship Hall. Parking available in lot off of Broadway and on street. Please DO NOT CALL FACILITY. Refer to the numbers on the back of schedule.

SAN PEDRO

November 3 (Thursday)

Peck Park Community Center
560 North Western Avenue
(Between W. Summerland Ave. & W. Crestwood Ave.)
90732

1:00 pm to 3:00 pm

6:30 pm to 8:30 pm

Note: Classes will be held in the Auditorium. Please DO NOT CALL FACILITY. Refer to the numbers on the back of schedule.

WEST HILLS

November 3 (Thursday)

First United Methodist Church of Canoga Park
22700 Sherman Way
(Between Fallbrook Ave. & Shoup Ave.)
91307

10:00 am to 12:00 pm

Note: Classes will be held in the Fellowship Hall. Please DO NOT CALL FACILITY. Refer to the numbers on the back of schedule.

City/Address	Date/Time
--------------	-----------

***Clerks must attend a "Clerks Class" to receive stipend.
If you are late, you will not be admitted.***

BELL GARDENS

November 4 (Friday)

Bell Gardens Veterans Park	9:30 am	to	11:30 am
6662 Loveland Street	12:30 pm	to	2:30 pm
(Between Perry St. & Suva St.)	3:30 pm	to	5:30 pm
90201	6:30 pm	to	8:30 pm

Note: Classes will be held in Ross Hall. Parking lot in front of building. Please DO NOT CALL FACILITY. Refer to the numbers on the back of schedule.

LOS ANGELES (Mid-Wilshire)

November 4 (Friday)

Wilshire United Methodist Church	9:30 am	to	11:30 am
4350 Wilshire Boulevard	12:30 pm	to	2:30 pm
(Between S. Plymouth Blvd. & S. Lucerne Blvd.)	3:30 pm	to	5:30 pm
90010	6:30 pm	to	8:30 pm

Note: Classes will be held in the Sanctuary. Parking lot is off Wilshire Blvd. Please DO NOT CALL FACILITY. Refer to the numbers on the back of schedule.

MONTEREY PARK

November 4 (Friday)

Service Club House	9:30 am	to	11:30 am
440 South McPherrin Avenue	12:30 pm	to	2:30 pm
(Between W. Newmark Ave. & W. Harding Ave.)	3:30 pm	to	5:30 pm
91754	6:30 pm	to	8:30 pm

Note: Classes will be held in the Main Room. Please DO NOT CALL FACILITY. Refer to the numbers on the back of schedule.

City/Address	Date/Time
--------------	-----------

***Clerks must attend a "Clerks Class" to receive stipend.
If you are late, you will not be admitted.***

RESEDA	November 4 (Friday)
First United Methodist Church of Reseda	9:30 am to 11:30 am
18120 Saticoy Street	12:30 pm to 2:30 pm
(On SW corner of intersection of Saticoy St. & Lindley Ave.)	3:30 pm to 5:30 pm
91335	6:30 pm to 8:30 pm

Note: Classes will be held in the Friendship Hall. Parking in lot behind church. Enter from Lindley Ave. or Garden Grove Ave. Please DO NOT CALL FACILITY. Refer to the numbers on the back of schedule.

ROWLAND HEIGHTS	November 4 (Friday)
Rowland Heights Community Center	9:30 am to 11:30 am
18150 East Pathfinder Road	12:30 pm to 2:30 pm
(Park entrance is just east of Fullerton Rd.)	3:30 pm to 5:30 pm
91748	6:30 pm to 8:30 pm

Note: Classes will be held in the Banquet Room. Please DO NOT CALL FACILITY. Refer to the numbers on the back of schedule.

HAWTHORNE	November 5 (Saturday)
Hawthorne Memorial Center	10:00 am to 12:00 pm
3901 West El Segundo Boulevard	1:00 pm to 3:00 pm
(Between Prairie Ave. & Cordary Ave.)	
90250	

Note: Classes will be held in the Venus Room. No Smoking. Please DO NOT CALL FACILITY. Refer to the numbers on the back of schedule.

City/Address	Date/Time
--------------	-----------

***Clerks must attend a "Clerks Class" to receive stipend.
If you are late, you will not be admitted.***

LOS ANGELES (West)	November 5 (Saturday)
Saint John's Presbyterian Church	10:00 am to 12:00 pm
11000 National Boulevard	1:00 pm to 3:00 pm
(Between Sepulveda Blvd. & Military Ave.)	
90064	

Note: Classes will be held in the Fellowship Hall. Please DO NOT CALL FACILITY. Refer to the numbers on the back of schedule.

PASADENA	November 5 (Saturday)
Westminster Presbyterian Church	10:00 am to 12:00 pm
1757 North Lake Avenue	1:00 pm to 3:00 pm
(Between E. Woodbury Rd. & Washington Blvd.)	
91104	

Note: Classes will be held in Morrison Hall. Parking in lot behind church. Enter lot from Fiske Ave. or Atchison St. Please DO NOT CALL FACILITY. Refer to the numbers on the back of schedule.

SAN FERNANDO	November 5 (Saturday)
San Fernando Regional Pool Facility	10:00 am to 12:00 pm
208 Park Avenue	1:00 pm to 3:00 pm
(Between 1st St. & 4th St.)	
91340	

Note: Classes will be held in the Multipurpose Room on 2nd floor; elevator is available. Street parking is available. Overflow parking is available in a vacant lot on the corner of Park Ave. and 4th St. Enter lot from 4th St. then walk down Park Ave. to facility. Please DO NOT CALL FACILITY. Refer to the numbers on the back of schedule.

City/Address	Date/Time
--------------	-----------

***Clerks must attend a "Clerks Class" to receive stipend.
If you are late, you will not be admitted.***

WEST COVINA	November 5 (Saturday)
West Covina Senior Citizens Center	10:00 am to 12:00 pm
2501 East Cortez Street	1:00 pm to 3:00 pm
(Between Citrus St. & Hollenbeck St.)	
91791	

Note: *Classes will be held in the Main Hall. Please DO NOT CALL FACILITY. Refer to the numbers on the back of schedule.*

COMPTON	November 6 (Sunday)
Dollarhide Community Center	10:00 am to 12:00 pm
301 North Tamarind Avenue	1:00 pm to 3:00 pm
(On NW corner of intersection of N. Tamarind Ave. & E. Palmer St.)	
90220	

Note: *Classes will be held in the Banquet Room. Parking in parking structure, enter from N. Tamarind Ave. on either side of building. Some street parking available. No food or drink, other than water allowed. Please DO NOT CALL FACILITY. Refer to the numbers on the back of schedule.*

HACIENDA HEIGHTS	November 6 (Sunday)
William Steinmetz Park	10:00 am to 12:00 pm
1545 South Stimson Avenue	1:00 pm to 3:00 pm
(Between E. Gale Ave. & Halliburton Rd.)	
91745	

Note: *Classes will be held in the Community Room. Additional parking in school parking lot. Please DO NOT CALL FACILITY. Refer to the numbers on the back of schedule.*

City/Address	Date/Time
--------------	-----------

***Clerks must attend a "Clerks Class" to receive stipend.
If you are late, you will not be admitted.***

MISSION HILLS

November 6 (Sunday)

Laborers' Union Local 300

10:00 am to 12:00 pm

14800 Devonshire Street

1:00 pm to 3:00 pm

(On SW corner of intersection of Devonshire St. & Woodman Ave.)

91345

Note: Classes will be held in the Assembly Room. Parking around building and in gated lot behind facility, enter lot from alley off of Woodman Ave. Please DO NOT CALL FACILITY. Refer to the numbers on the back of schedule.

NORWALK

November 6 (Sunday)

Norwalk Arts and Sports Complex

10:00 am to 12:00 pm

13200 Clarkdale Avenue

1:00 pm to 3:00 pm SPANISH INTERPRETER

(Between Sproul St. & Olive St.)

90650

Note: Classes will be held in the Rich Rehearsal Hall Multipurpose Room. Parking available across from the facility at the corner of Clarkdale Ave. & Sproul St. Please DO NOT CALL FACILITY. Refer to the numbers on the back of schedule.

VAN NUYS

November 6 (Sunday)

Van Nuys Park Recreation Center

10:00 am to 12:00 pm

14301 Vanowen Street

1:00 pm to 3:00 pm

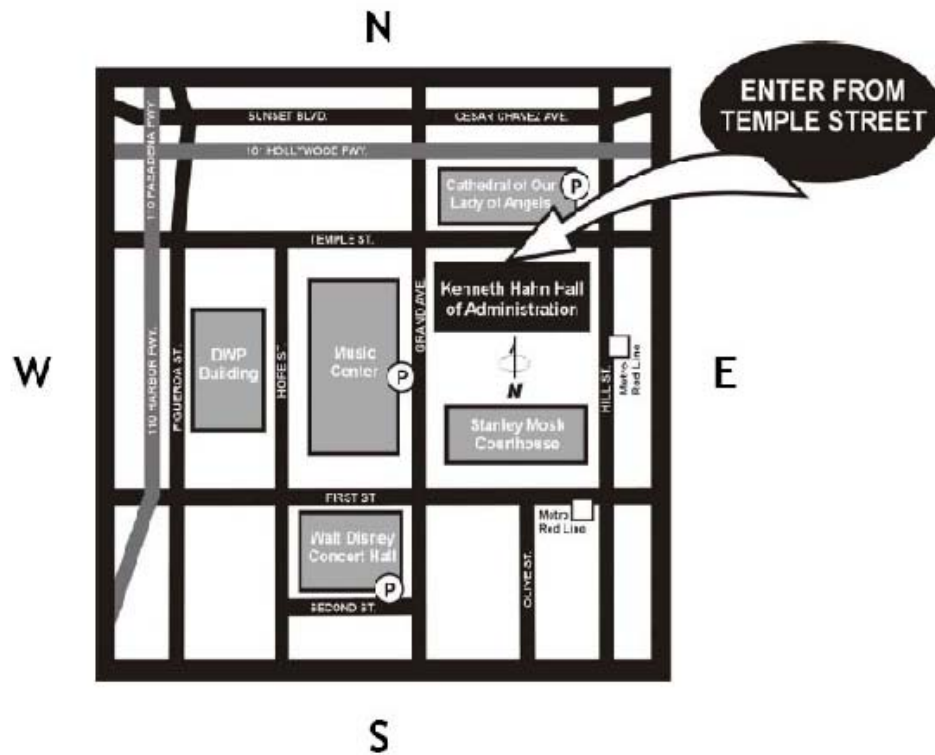
(Between Van Nuys Blvd. & Hazeltine Ave.)

91405

Note: Classes will be held in the Gymnasium. Parking lot entrance is on Tyrone Ave. Additional parking on Tyrone Ave. and Lennox Ave. Please DO NOT CALL FACILITY. Refer to the numbers on the back of schedule.



HALL OF ADMINISTRATION MAP





SUMMARY OF DUTIES

ABOUT THE CLASSES.....

- CLASSES FOR CLERKS ARE 2 HOURS LONG
- YOU WILL RECEIVE 2 TRAINING MANUALS:

ELECTION GUIDE AND CHECKLIST



THE YELLOW ELECTION GUIDE AND CHECKLIST PROVIDES CHECKLISTS AND COMMON INFORMATION FOR SETTING-UP AND RUNNING YOUR POLLING PLACE.

WHAT TO DO IF...



THE GREEN WHAT TO DO IF... PROVIDES PROCEDURES ON RESOLVING PROBLEMS AND SPECIALIZED SITUATIONS.

ABOUT YOUR DUTIES.....

THE FOLLOWING IS A SHORT OVERVIEW OF DUTIES. (THE ELECTION GUIDE AND CHECKLIST GIVES DETAILED INSTRUCTIONS.)

AS A CLERK, YOU WILL ASSIST THE INSPECTOR IN SETTING-UP THE POLLING PLACE, ASSISTING VOTERS, CLOSING THE POLLS, AND PACKING SUPPLIES. THE INSPECTOR WILL ASSIGN YOU TO ONE OF 4 JOB POSITIONS THAT MAY BE ROTATED THROUGHOUT THE DAY.

- **ROSTER CLERK POSITION:** WHERE VOTERS WILL SIGN THE ROSTER.
- **STREET INDEX CLERK POSITION:** WHERE YOU LINE OUT THE ADDRESS OF VOTERS AS THEY SIGN IN.
- **BALLOT CLERK POSITION:** WHERE YOU GIVE VOTERS A BALLOT AND DEMONSTRATE TO VOTERS HOW TO VOTE USING THE INKAVOTE VOTING DEVICE.
- **BALLOT BOX CLERK POSITION:** WHERE YOU ASSURE THAT THE VOTER PLACES VOTED BALLOTS INTO THE PRECINCT BALLOT READER AND ASSIST VOTERS USING THE AUDIO BALLOT BOOTH.

IN ADDITION THERE ARE **PROVISIONAL VOTER PROCESSING PROCEDURES** WHERE YOU ASSIST VOTERS WHO NEED TO VOTE USING THE PROVISIONAL ENVELOPE.



IF YOU STILL HAVE QUESTIONS AFTER YOU HAVE ATTENDED THE CLASS AND REVIEWED THE MATERIALS, YOU MAY CONTACT US AS INDICATED ON THE BACK PAGE OF THIS SCHEDULE.



TELEPHONE DIRECTORY

FOR MORE INFORMATION CONTACT THE **REGISTRAR-RECORDER/COUNTY CLERK** AT **1 (800) 815-2666** AND FOLLOW THE PROMPTS, OR YOU MAY DIRECTLY CALL THE OFFICES LISTED BELOW:

REGISTERING TO VOTE (562) 462-1310

AFTER REGULAR OFFICE HOURS (8 A.M. TO 5 P.M.) YOU MAY LEAVE A RECORDED MESSAGE REQUESTING INFORMATION FORMS TO BE MAILED TO YOU THE NEXT DAY.

REGISTRATION/SAMPLE BALLOT INQUIRIES (562) 466-1323

VERIFICATION OF VOTER STATUS, WHERE TO VOTE AND ASSISTANCE WITH REGISTRATION/SAMPLE BALLOT PROBLEMS. UNDER FEDERAL LAW VOTER INFORMATION AND SAMPLE BALLOTS ARE AVAILABLE IN THE FOLLOWING LANGUAGES: BENGALI, CHINESE, HINDI, JAPANESE, KHMER, KOREAN, SPANISH, TAGALOG/FILIPINO, THAI, AND VIETNAMESE. CALL 1 (800) 481-8683 TO REQUEST INFORMATION.

VOTE BY MAIL BALLOTS (562) 462-1323

INFORMATION ON HOW TO REQUEST AND/OR COMPLETE APPLICATION FOR VOTE BY MAIL BALLOT.

ELECTION INFORMATION (562) 462-1310

GENERAL INFORMATION ON ELECTIONS, REGISTRATION AND VOTER SERVICES.

TDD (HEARING IMPAIRED) (562) 462-2259

GENERAL INFORMATION ON ELECTIONS, REGISTRATION AND VOTER SERVICES.

FOR QUICK INFORMATION, VISIT OUR WEBSITE ...

SEARCH

WWW.LAVOTE.NET





Notes

QUESTIONS?

Please do not call the facilities listed in this schedule.

They provide the rooms for classes and will not be able to answer your questions.

Questions should be directed to:

POLLS

...if you have questions about:

Classes-Your Assignment-Getting Paid-Your Precinct Board

***For the quickest response, call
the number on your Appointment Notice.***

If you do not have that number call:

562.462.2509 or

800.815.2666 (Option 7)

“ASK WANDA”

...if you have questions about:

Procedures at the polling place-Something you did not understand in the class

***For the quickest response, send an email to:
AskWanda@rrcc.lacounty.gov***

If you do not have email access, call:

562.462.2728
